



SC Office of Regulatory Staff's Role in Emergency Management ESF 12 Energy

Utility Public Safety Alliance

April 20, 2016

Tom Allen

SC Office of Regulatory Staff

Deputy Director, Safety and Transportation

803-737-0974 (office)

803-622-5308 (cell)

tallen@regstaff.sc.gov



Table of Contents

- I. Winter Storm 2014/October Flooding 2015
- II. ESF 12
- III. Enabling Statute
- IV. Organization of ESF 12
- V. Responsibilities of ORS
- VI. ORS Goals
- VII. Responsibilities of the Public Service Authority
- VIII. Activation
- IX. Technical Expertise
- X. Operating Conditions
- XI. Recovery
- XII. Federal Interaction
- XIII. Partners



I. Winter Storms 2014

- As a result, Governor mandated that all those involved in emergency preparedness and response improve processes
- EMD and ESF 12 have taken steps to build relationships and improve cooperation with Energy Providers



I. Lessons Learned from October Flooding

- Power issues were minimal, natural gas and rail issues were prevalent
- Relationships matter—provide assistance to the utilities through DOT, SLED, DNR, National Guard



II. What is an ESF?

Emergency Support Functions:

1. The State has established ESFs with State agencies and volunteer organizations to support response and recovery operations.
2. A State agency within each ESF has primary responsibility for the coordination and implementation of the ESF.
3. By Executive Order, the designated primary agency will coordinate the development and preparation of Standard Operating Procedures (SOP).
4. Support agencies and volunteer organizations are incorporated into plans and annexes.
5. Additional State agencies may be required to support each State ESF.



ESF-1 Transportation--DOT
ESF-2 Communications—Department of Administration
ESF-3 Public Works and Engineering—Department of Administration
ESF-4 Firefighting--LLR
ESF-6 Mass Care--DSS
ESF-7 Finance and Administration--SC Emergency Management Division
ESF-8 Health and Medical Services--DHEC
ESF-9 Search and Rescue—LLR
ESF-10 Hazardous Materials--DHEC
ESF-11 Food Services--DSS
ESF-12 Energy--Office of Regulatory Staff
ESF-13 Law Enforcement--SLED
ESF-14 Initial Recovery and Mitigation--SCEMD
ESF-15 Public Information—SCEMD
ESF-16 Emergency Traffic Management—DPS
ESF-17 Animal/Agriculture Emergency Response--Clemson University
ESF-18 Donated Goods and Volunteer Services—Dep't of Administration
ESF-19 Military Support--SC National Guard
ESF-24 Business and Industry--SC Department of Commerce

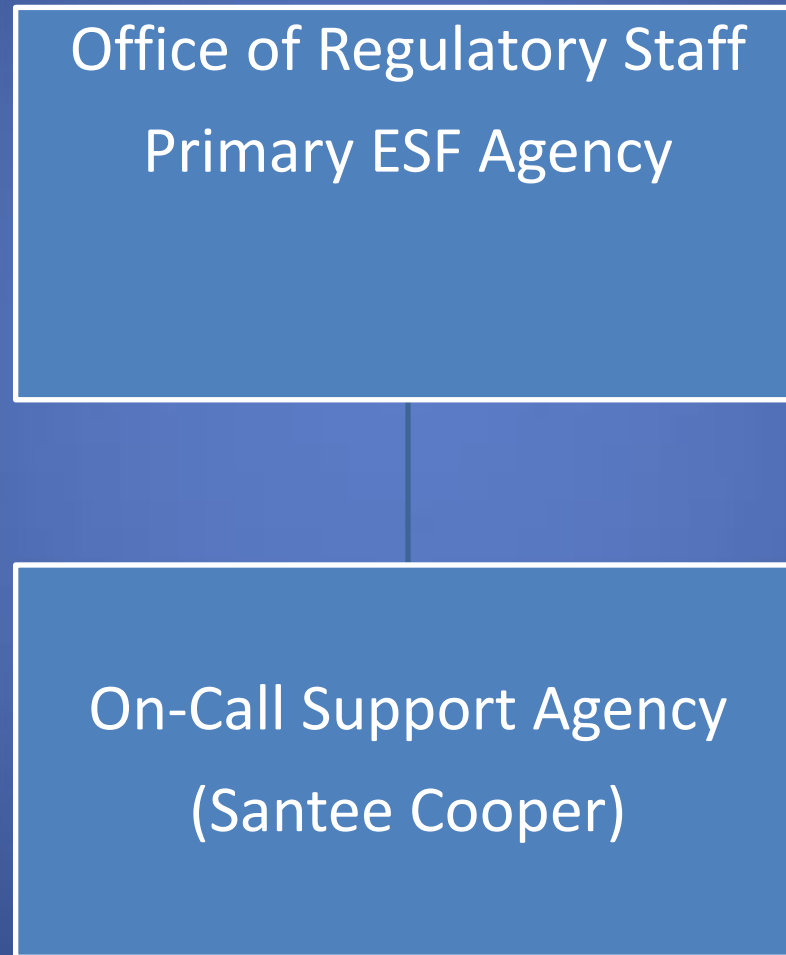


III. Enabling Statute

- ESF-12
 - Authority: Granted in 58-4-50 of the SC Code. It empowers ORS to carry out their duties described in the South Carolina Emergency Operation Plan (SCEOP)
 - Purpose during a Disaster in South Carolina:
 - 1) Assist in assessing the extent of damage and provide information to EMD and the Governor.
 - 2) Monitor, report, and coordinate, when necessary, the restoration of energy systems



IV. Organization of ESF 12



V. Responsibilities of ESF 12

- ORS is the Administrator and Coordinates Training of personnel
- ORS leads on Electric and Natural Gas issues, provides support on rail issues
- Public Service Authority (Santee Cooper) is a support agency



- ORS coordinates Petroleum Product resources (Fuel Plan)

VI. ORS Goals

- ORS will:
 - assign and train ORS staff to support ESF-12
 - maintain communications with Energy Providers and other ESF's as required for SEOC operations
 - Assist in coordinating the priorities to repair damaged energy systems
 - assist in establishing temporary, alternate, or interim sources of natural gas and electrical power





VI. ORS Goals

- report generating capacity, demand, customers impacted by county, proposed restoration times, major generators out of service
- monitor the status of natural gas pipelines
- support efforts to manage auto transportation fuel supplies in the event of a shortage affecting residential, commercial, industrial customers
- aid in managing evacuation fuel/refuel plan activities
- Support rail issues

VII. Responsibilities of Public Service Authority

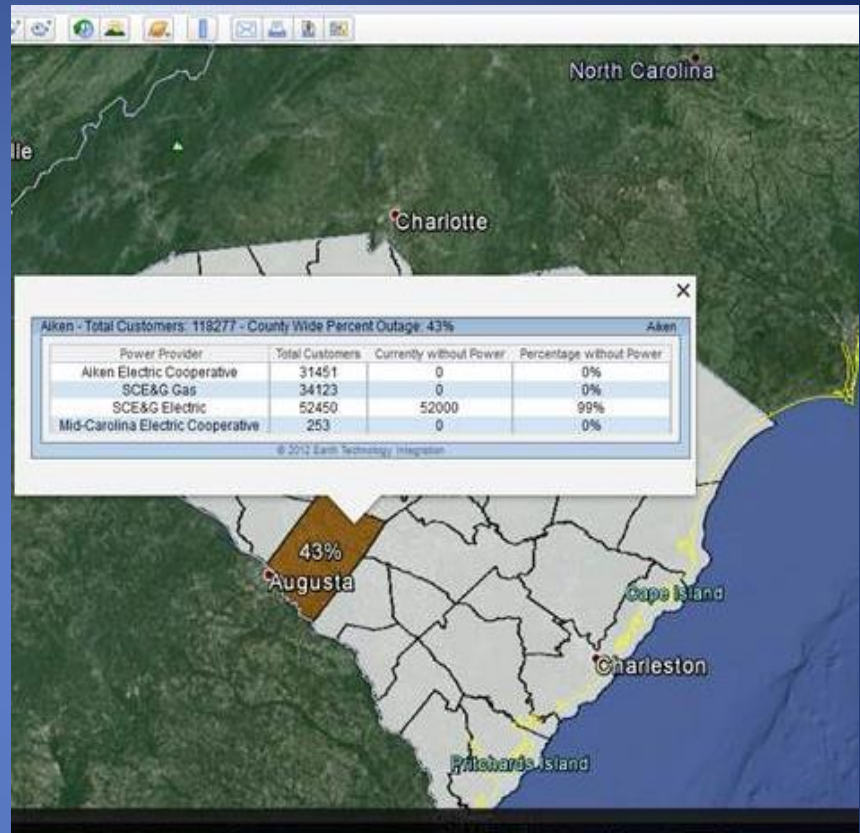
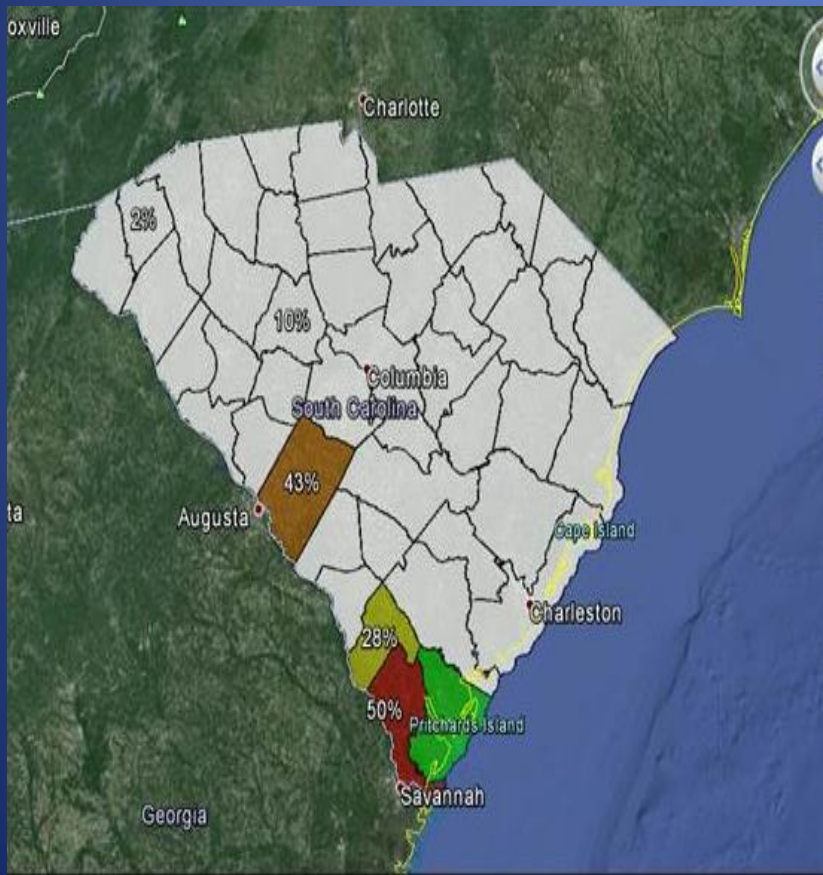
- Public Service Authority (Santee Cooper) will:
 - identify, train and assign Santee Cooper staff to support ESF-12
 - provide equipment and technical assistance
 - maintain assessment and coordination efforts with all supporting agencies and energy service providers
 - provide energy emergency information, education, and conservation guidance to the public
 - assist in alternate energy supply for EAP, if needed



VIII. Activation Notification

- Upon notification by EMD, ESF 12 Director will notify all team members and Energy Providers of activation—Will send out provision request for update





IX. Technical Expertise

--ORS Team has members that specialize and can provide assistance beyond Energy

Areas of Focus:

1. Transportation
2. Fuel
3. Railroad
4. Legal
5. National Guard
6. Natural Gas
7. Consumer Complaints
8. Social Services
9. Telecommunications
10. Electric



X. Operating Conditions

A. OPCON 5--Normal Conditions

B. OPCON 4--Storm poses a threat to SC

--Director contacts SCEMD to determine needs.
ESF-12 and Energy Providers notified of possible activation.

C. OPCON 3--Storm poses a significant threat

--ESF 12 is fully activated and manning the SEOC at EMD round the clock.



X. Operating Conditions

D. OPCON 2--mandatory evacuation decision is imminent

--ESF-12 is supporting 24 hr. shift coverage and may enact fuel/refuel plan if directed by SEOC

--Contact affected Energy Providers as required for reporting

E. OPCON-1--16 hours before Mandatory Evacuation



XI. Recovery

1. Maintain coordination with supporting agencies
2. Continue to provide energy information
3. Plan for FEMA,ESF-12 and DOE personnel in SEOC.
4. Monitor restoration operations until all services restored
5. Maintain appropriate records of costs incurred during event (ORS)
6. Determine if Alternative Energy for Generation is needed and coordinate with Santee Cooper



XII. Federal Interaction

- ESF-12 will interact with and respond to requests from National Response Framework, ESF-12 Energy
- Can Assist Energy Providers with FEMA information



XIII. Partners

<u>Energy Providers</u>	
Peggy Dantzer	Electric Coops of SC
Mark Quinn	Electric Coops of SC
Todd Carter	Electric Coops of SC
Eric Budds	SCAMPS
Greg Redmond	Dominion/CGT (Gas)
Barbara Yarborough	Duke
Walt Simms	Duke
Mark Blinson	Duke
Geoff Penland	Santee Cooper
Stephen Spivey	Santee Cooper
Mollie Gore	Santee Cooper
Byron Hinson	SCE&G
Greg McGlohorn	SCE&G (Gas)
David Kibler	SCE&G
Jeff Kleckley	SCE&G
Bruce Barkley	PNG (Gas)
<u>Fuel Partners</u>	
Bonnie Loomis	API
Jim Weber	Spinx
David Mitchell	Spinx
Laval Edmondson	
Eric Thomison	Speedway
Kevin Peter	Speedway
Archie Wood	Speedway
Susan Westendorf	Speedway
Alpen Khatri	Pantry
Caroline Dorman	Pantry
Mark Holmes	Pantry
Michael Courtney	Pantry
Heather Brown	Pantry
<u>RAIL</u>	
David Adams	FRA RSOM



Questions or Comments?

Tom Allen

SC Office of Regulatory Staff

Deputy Director, Safety and Transportation

803-737-0974 (office)

803-622-5308 (cell)

tallen@regstaff.sc.gov

