



Utility Public Safety Alliance Meeting

April 20, 2016

Charleston, SC

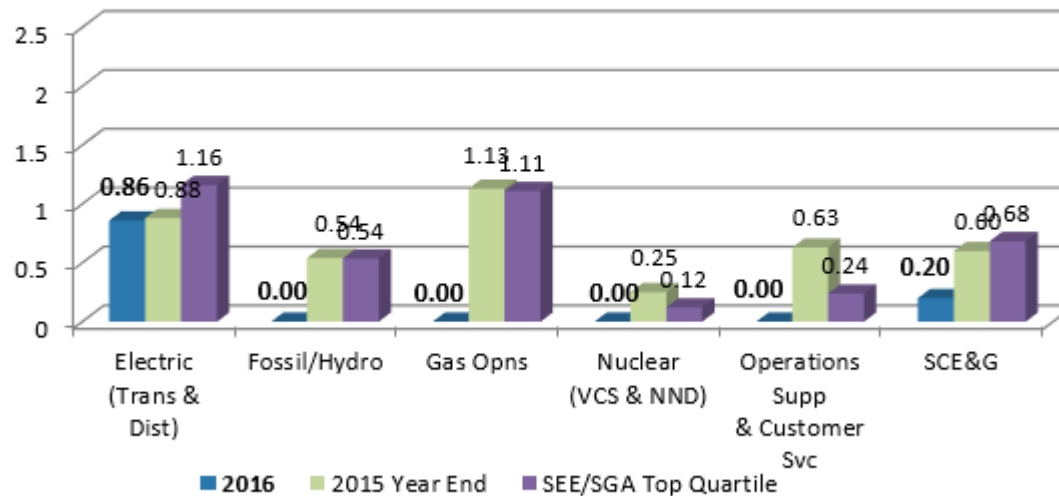


Our Priorities

- Employee Safety
- Public Safety
- Customer Service



SCE&G Accident Frequency Rate
(Medical, Lost Time & Fatal Incidents) 2016
March 2016
SEE 4th Qtr(2015) SGA YE 2014





Brief History

1846 – Charleston Gas Light Company

1848 – 485 customers have gas street lights

1897 – Charleston City Railway Company

1926 – Utilities merged to form South Carolina Power Company

1937 – Broad River Power Company changed name to South Carolina Electric & Gas Company

1948 – SCE&G acquired South Carolina Power Company

1984 – SCANA holding company formed



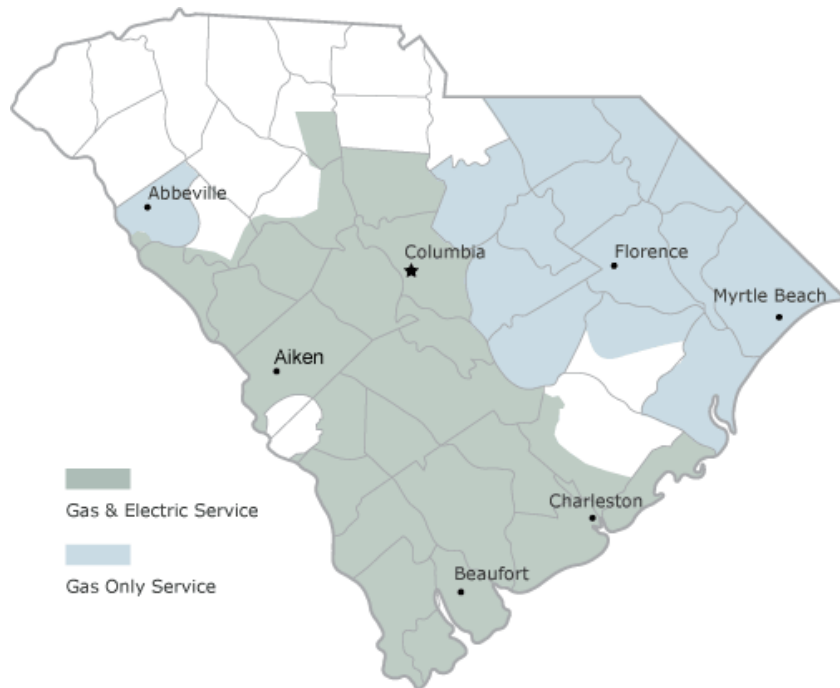
SCANA

- SCE&G
- PSNC Energy
- SCANA Energy
- SCANA Energy Marketing



SCE&G

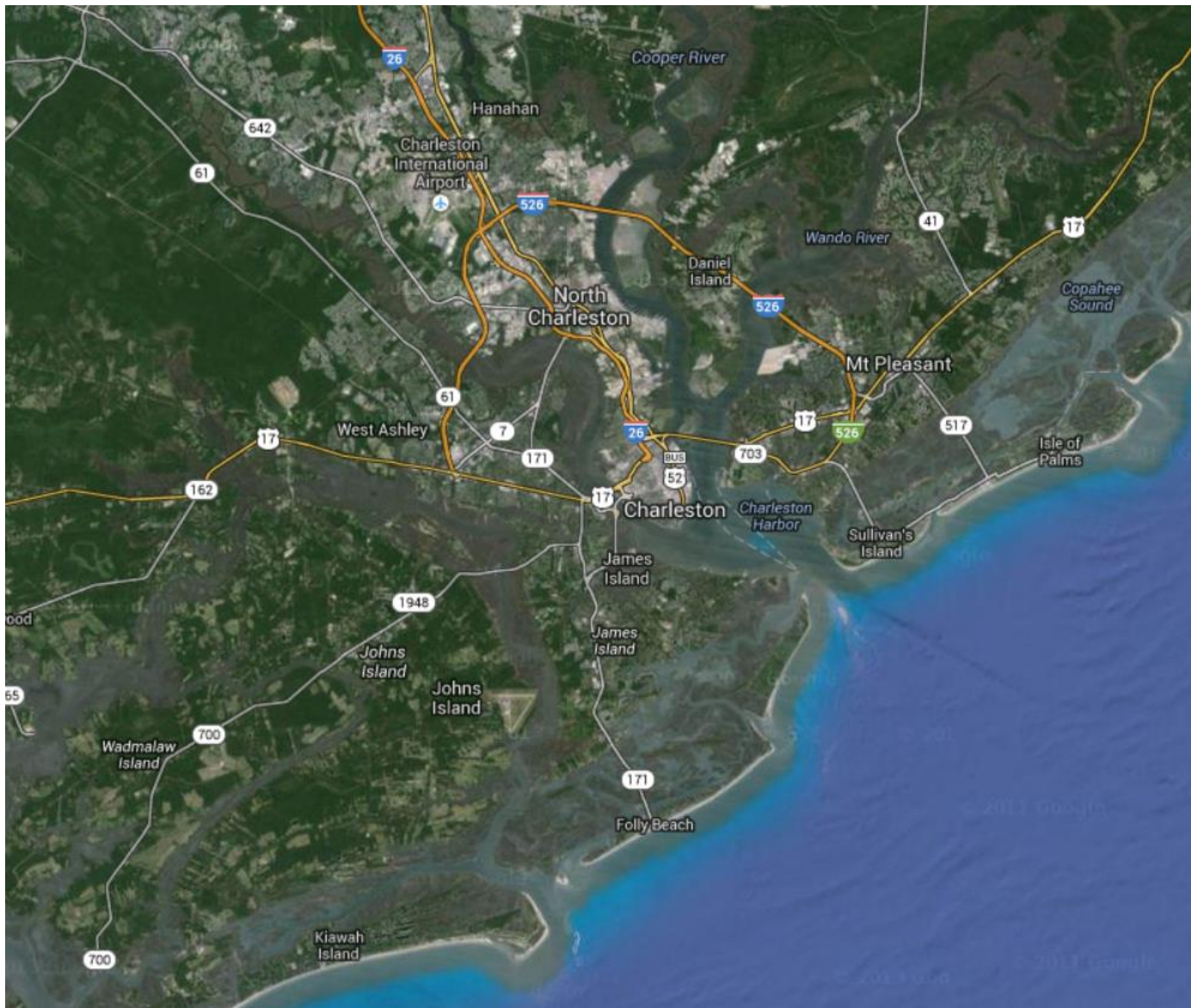
Electric and Gas Service Territory





SCE&G Statistics

- Electric Customers – 699,500
- Gas Customers – 347,000 (PSNC – 530,000)
- Miles of Electric Distribution lines – 13,019 OH + 5,126 UG = 18,145 total
- Miles of Electric Transmission lines – 3,516 OH + 15 UG = 3,531 total
- Distribution Automation – 1,000 line devices + 750 breakers
- Distribution Line Clearing Average Cycle – 5 Years
- SAIDI – 117.3 (2010), 115.0 (2011), 98.4 (2012), 90.9 (2013), 96.6 (2014), 96.6 (2015)



Charleston City Railway Power House (1897)



Charleston City Railway Power House – Cable Exit



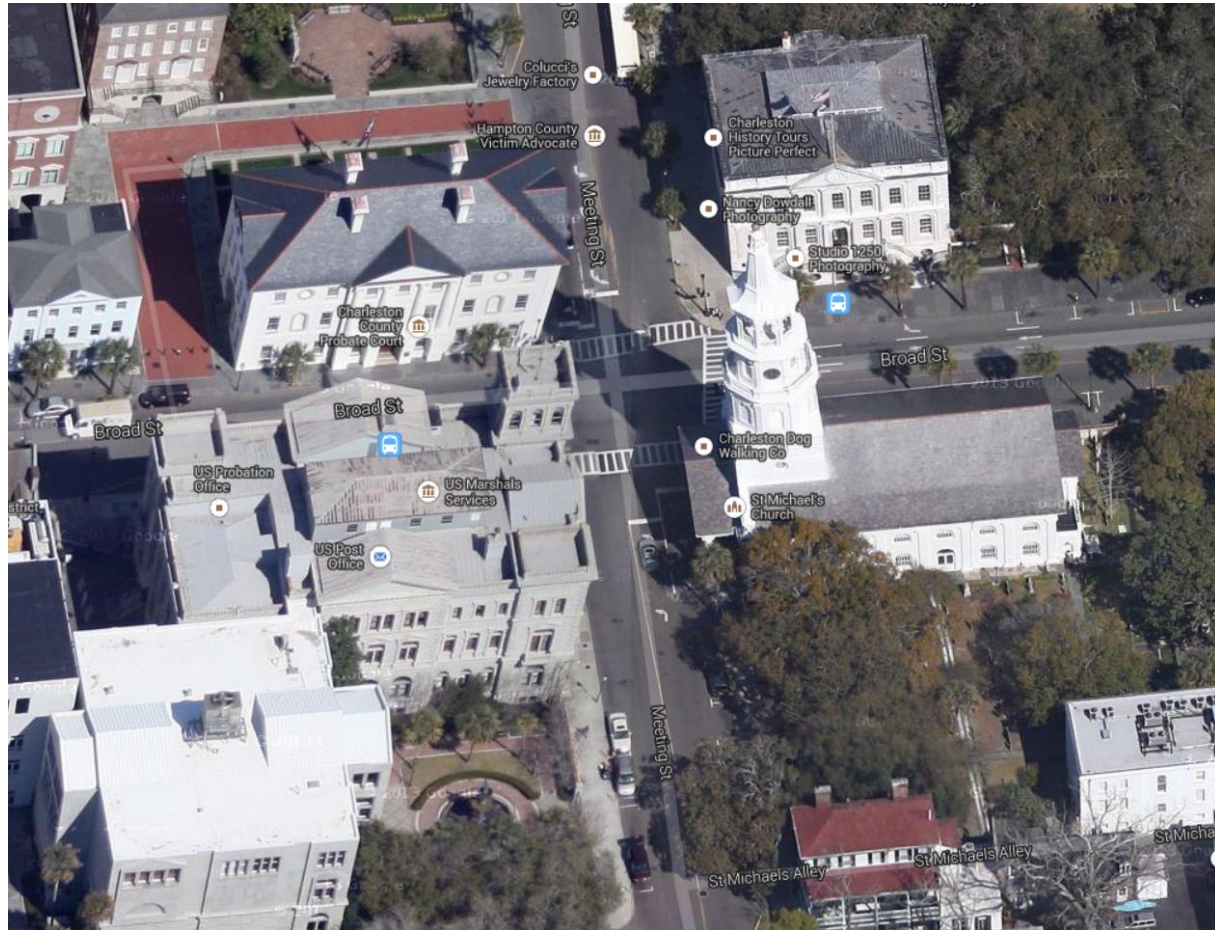
Charleston City Railway Power House (1897)



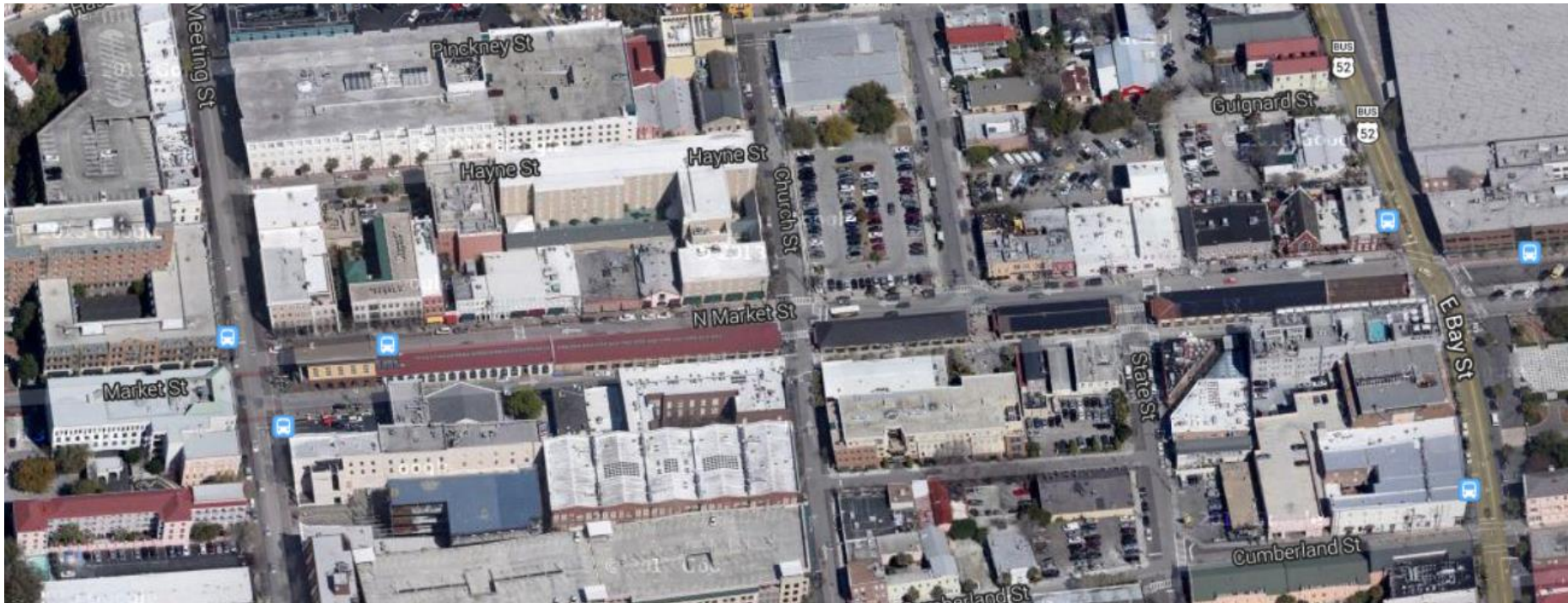
Charleston City Railway Car House (1897)



Four Corners of Law



Market Street



Fort Sumter/Fort Moultrie



Charles Towne Landing

First permanent English settlement in Carolina (1670)





Questions???