

**FirstEnergy – Public Safety
UPSA Webinar
February 17, 2022**



FirstEnergy Public Safety Journey

Following FE Tomorrow, a Public Safety group was created within FEU Safety in 2019, as Executives noted that we needed to improve our public safety efforts.

A public safety vision was created for FirstEnergy:

“Develop and actively manage a proactive public safety program in an effort to protect human life, reduce exposure, and eliminate events for any member of the public who may come near FirstEnergy lines or equipment.”



2019 Contractor & Public Safety Structure

Shelley Baber
Manager
Contractor & Public Safety*
(10)

Kara Brenneman
Supervisor
T & D Contractor Safety
(5) – Alex Wiltse

Ross Coberly
Vegetation Management Safety

Jodi Dragich
Generation Contractor Safety

Safety Analyst

Candy Elliott
Public Safety

FirstEnergy Public Safety History

- In 2019, no consistent approach fleetwide, and no comprehensive public safety education/outreach program with dedicated resources and financial support.
- All operating companies had limited outreach, which largely faded away years ago (est. 2002).
- Some fragmented efforts existed which largely stem from significant claims:
 - Web information (not standardized)
 - Limited First Responder education
 - Limited 3rd Party contractor mailers (due to regulatory expectation in PA)
 - No external school education (historically all operating companies had Louie the Lightning bug programs)
 - No general public outreach beyond website
 - No public safety branding
 - No software or system to track outreach efforts

2019 Public Safety – How Did We Get There?

1. **Benchmark / Internal Audit** ✓
2. **Program Development** ✓
3. **Educate** ✓
4. **Assess** ✓



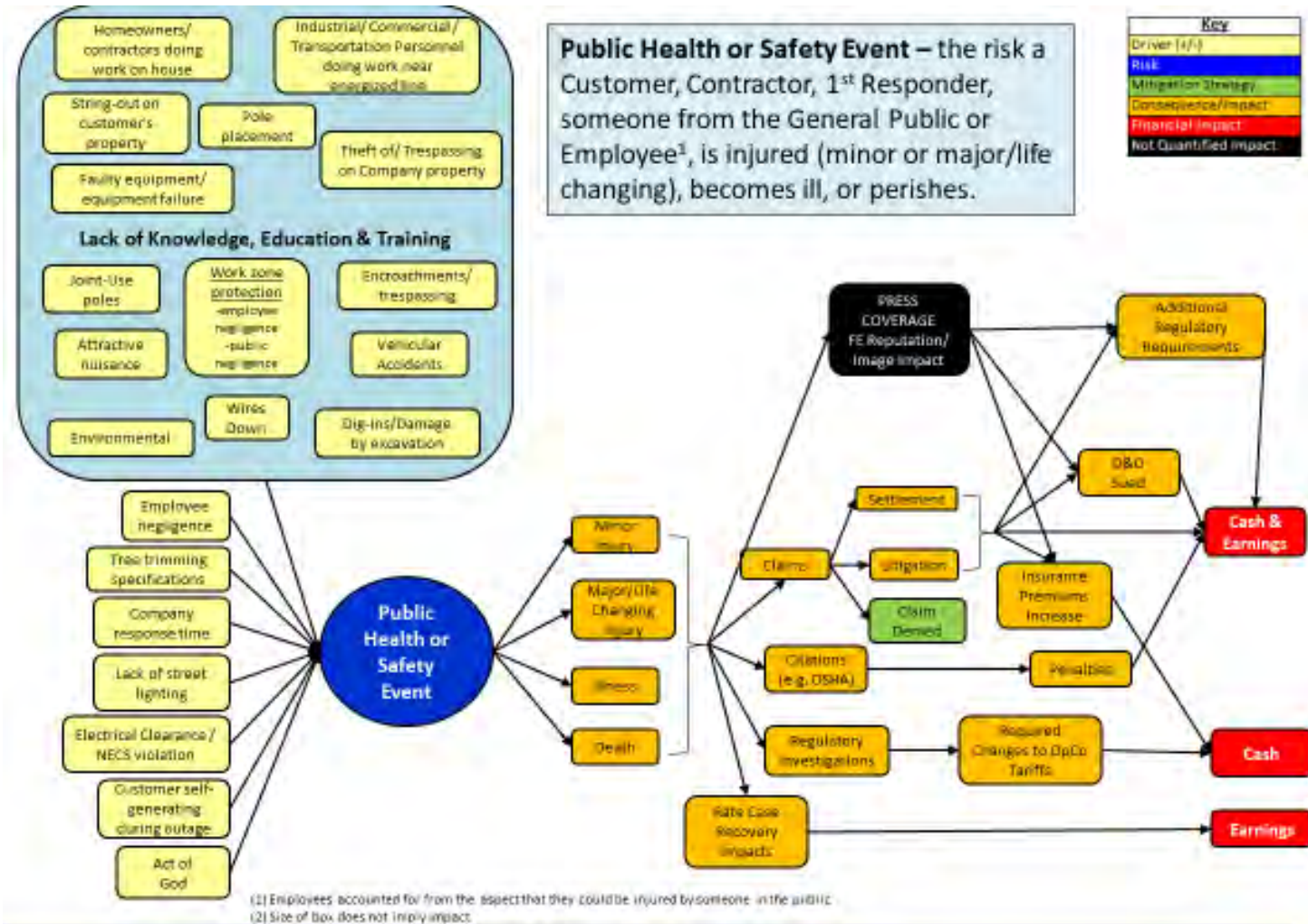
Utility Benchmarking - 2019/2020

- Consumers
- CPS
- Oncor
- Centerpoint
- Alabama Power
- Mississippi Power
- Avista
- PPL
- Southern Cal Edison
- APS
- Dominion
- Middle Tennessee Electric
- Duke
- Florida Power and Light
- Salt River Project
- NiSource/Nipsco
- DTE
- National Grid
- Xcel
- PG&E
- AEP
- TVA
- Sevierville
- Pike Electric



Internal Audit – Bowtie Analysis (2018)

- Internally, an audit was conducted
- Many opportunities and business risks identified




Public Safety Working Team



Identify Current Public Safety Initiatives

Collaborate



Develop Public Safety Tracking Tool

Utilize Claims Data for Program Development



Drive Collaboration & Consistency

Public Safety Programs/Efforts

■ **Web & Mail Based Programs**

- At Risk Contractors (3rd party)
- First Responders
- K-6 School Age

■ **First Responder In-Person Program**

- Live Wire Electrical Safety Trailer
- First Responder Visor (Quick Reference Guide)
- Standardized Script

■ **K-6 In-Person Program aimed at 4th graders (Developed by on hold due to COVID)**

- Video
- PowerTowns (miniature safety demonstrator allows us to bring electrical safety into the classroom)
- Activity Booklet (featuring Max Safety)

Public Safety Programs/Efforts

■ General Public Outreach

- Bill envelope branded with downed wire public safety messaging
- Quarterly inserts (downed wire, encroachments, ladder safety & drone safety)
- Media Campaign (Stop.Look.Live)
 - Digital Social Media (Display Banners, Native, Video – CTV/OTT, Streaming Audio)
 - Billboards (Digital & Posters)
 - Radio (Indians & Browns Broadcast)
 - Paid Social Media (Facebook, Twitter, & YouTube)

■ Encroachment Campaign

- Launch public safety awareness campaign on potential dangers posed by encroachments along poles, wires, and substations

■ Drone Campaign

- Educational outreach for safe use of drones around electrical equipment

Culver First Responder Mail/Web Outreach Program



ELECTRICAL SAFETY FREE SAFETY KIT RESOURCES HOME

first responder beware®

Firefighters, police and EMTs are typically first on the scene in an emergency and face the greatest risk from electrical hazards. Understanding the potential dangers and learning how to deal with them correctly makes everyone safer.

<https://firstenergy.e-smartresponders.com/>

first responder beware®

Staying Safe While Saving Others

Electrical Safety for First Responders

For emergencies call 911 immediately
For more information, visit firstenergycorp.com/firstresponders

FirstEnergy
Mid-Ed • Potomac • Penn Power • West Penn Power

first responder beware | **STOP. LOOK. LIVE.** | **FirstEnergy**
Mid-Ed • Potomac • Penn Power • West Penn Power

**Staying safe while saving others:
Electrical safety for first responders**

In an electrical emergency, call 911 immediately.

Beware of overhead power lines

Always assume lines are energized.

- Keep all personnel and equipment as far away as possible from overhead power lines, including the service drops that run from utility poles to buildings. Personnel, ladders and fully extended aerial equipment must never get closer than 30 feet from overhead lines up to 50,000 volts, and higher voltages on large transmission towers require additional clearances of up to 50 feet.
- Use a spotter. An equipment operator working alone cannot safely judge the distance from the equipment to overhead power lines.
- If your aerial equipment contacts a power line, it should be considered energized.
 - Stay put, warn others to stay away and have someone call 911 immediately.
 - If you must get off the equipment due to imminent danger, jump clear. Do NOT touch the equipment and the ground at the same time. Land with your feet together and shuffle at least 30 feet away, keeping both feet close together and on the ground at all times.



Be extra cautious near downed power lines

Anything touching a downed line may be energized.

- Call 911 immediately. Never touch fallen lines. Secure the area at a distance of at least 30 feet in all directions.
- Keep yourself and the public as far away as possible from fallen power lines and objects that may be energized—never get closer than 30 feet. Downed transmission lines from large towers require a distance of 100 feet.
- Do NOT enter, approach or touch a vehicle that may be energized.
- Resist the temptation to extract passengers. Anyone who contacts the vehicle and the ground at the same time could suffer a serious or fatal electric shock. Instruct occupant(s) to drive the vehicle far away from the line if they can do so safely. If the vehicle cannot be safely moved, instruct them to stay put until FirstEnergy utility crews give the all clear.
 - If occupants are in imminent danger from fire or other hazards, stay away. Instruct



first responder beware | **STOP. LOOK. LIVE.**

Electrical Safety
Keep this card in your vehicle visor as a quick reference guide.

Downed power lines
Secure the area. Keep yourself and the public AT LEAST 30 feet away from fallen power lines and 100 feet away from large transmission lines. If a vehicle is involved, follow these steps:

- Do NOT enter, approach or touch the vehicle; doing so puts you at risk of electric shock.
- Call 911 immediately.
- Instruct the occupant(s) to drive the vehicle away from the line if they can do so safely.
- If the vehicle cannot be safely moved, instruct the occupant(s) to STAY INSIDE until FirstEnergy utility crews give the all clear. Staying in the vehicle is their best protection against electric shock and injury.
- If the occupant(s) are in imminent danger from fire or other hazards, stay away and instruct them to jump clear without touching the vehicle and the ground at the same time. They must land with feet together and shuffle at least 30 feet away, keeping both feet close together and on the ground at all times.
- Demonstrate the proper procedure from a distance.
- If anyone in the vehicle is injured, disabled or otherwise unable to safely exit the vehicle, your incident commander will tell you how to proceed.

To report emergencies, call 911 immediately. For additional safety information, visit firstenergycorp.com/firstresponders.

FirstEnergy
Mid-Ed • Potomac • Penn Power • West Penn Power

Culver First Responder Mail/Web Outreach Program

■ First Responder Program Methodology Overview

- Culver Company distributes FirstEnergy-branded public safety information to approximately 6,300 first responder organizations in the service territory annually.
- The outreach includes an electric safety poster and detachable visor card that was designed to be hung at the workplace or kept in their vehicles for reference.
- Stakeholders are encouraged to request additional educational materials by either returning a postage-paid business reply card or requesting materials online using the FirstEnergy e-*SMARTresponders* website.

Metric	MD	NJ	NY	OH	PA	VA	WV	Other*	Totals
Stakeholders Mailed to	232	1,070	11	1,585	2,729	13	706	2	6,348
Total Requests for Materials	18	64	0	90	135	2	33	0	342
Response Rates	7.8%	6%	0%	5.7%	4.9%	15.4%	4.7%	0%	5.4%
Kits Distributed	42	160	0	212	273	5	73	0	765
Total Materials Distributed	1,342	5,294	11	7,187	9,962	145	2,637	2	26,580

*Direct mail outreach and/or requests for additional safety materials may include states outside of the service territory due to differences in physical and mailing addresses.

By July 25, 2021, FirstEnergy had received 342 requests for public safety awareness educational materials reaching the kit goal of 765.

Culver At-Risk (3rd Party) Contractor Mail/Web Outreach Program

worker beware

WELCOME

FirstEnergy invites you to explore our worker safety website. Check out our safety tips, videos, and case studies. Each of these is designed to help you and your team work safely around electric lines.

<https://firstenergy.e-smartworkers.com/>

worker beware | **STOP LOOK LIVE** | **FirstEnergy**
Ohio Edison • The Illuminating Company • Toledo Edison

Electrical safety information for you and your employees

For emergencies, call 911 immediately.

Beware of power lines
Consider ALL power lines energized and dangerous.

- Survey your job site every day to find overhead power lines, poles, and guy wires and point them out to coworkers. Contact your FirstEnergy electric company for power line assistance or questions at 1-888-LIGHTSS.
- When working with ladders or long tools: Stay at least 10 feet away from overhead lines carrying up to 50 kV. If you are unsure of the voltage, contact your FirstEnergy electric company.
- Keep the crane boom and load at least 20 feet away from lines up to 350 kV and 50 feet away from lines over 350 kV and up to 1000 kV. Always assume the line is energized, and allow nothing closer unless you have confirmed with the utility center/operator that the line has been de-energized. For specific requirements, consult www.osha.gov.

Notify 811 before you dig
Know what's below to dig safely.

- Notify 811 before you dig or move earth in any way. This free service will arrange to have underground utility lines marked so you can dig a safe distance away from them.
- Use 811 or use the online ticket-entry system at oups.org. Then wait the required time for facility owners to mark their lines before you dig:
 - In Ohio, wait at least 48 hours, excluding weekends and legal holidays.
- Pre-mark your proposed excavation area with white paint, flags, and/or stakes before you contact 811.
- Leave a tolerance zone of at least 18 inches on either side of the indicated outside edges of buried utility lines. Do not power dig within this zone; hand dig or use other nonintrusive methods.
- Respect the marks, hand expose to verify location, and dig with care.
- If you don't notify 811, you risk hitting an underground power line. You or your coworkers could be hurt or killed. You may be held liable for damages and repair costs.

If your equipment contacts a power line
Stay on the equipment and warn others to stay away.

- Move the equipment away from the line if you can do so safely.
- Stay on the equipment until utility workers notify you it is safe to exit.
- Warn others to stay away. Anyone on the ground who touches the equipment may be injured or killed; also, the ground nearby may be energized.
- Have someone call 911 immediately to report the emergency.
- If you must exit the equipment due to fire or other imminent danger, do NOT touch the equipment and the ground at the same time. Jump clear, land with your feet together, and shuffle at least 30 feet away, keeping your feet close together and on the ground at all times. Do not return to the equipment.

Don't risk it! Use a spotter
A spotter helps you stay clear of overhead lines.

- An equipment operator working alone cannot safely judge the distance from the equipment to overhead power lines. Work with a spotter whose only responsibility is to keep you and your equipment a safe distance from overhead lines and other hazards.
- When a crane or other equipment hits an overhead power line, workers on the ground guiding the load are in the most danger. Electricity can travel through the tag line and through you, as well as into the ground.
- Don't risk injury or death by trying to guide a load and spot at the same time. Rely on a dedicated spotter to help keep you clear of power lines.
- Crane and derrick operators: Always use a dedicated, qualified spotter.

To learn more about contractor safety and order informative materials, visit firstenergycorp.com/worksafe.

worker beware

Work Safely Around Electric Lines

STOP LOOK LIVE

For emergencies call 911 immediately

FirstEnergy
Ohio Edison • The Illuminating Company • Toledo Edison
Met-Ed • Peoples • Penn Power • Jersey Central Power & Light
West Penn Power • Mon Power • Potomac Edison

worker beware | **In Case of Emergency!**
Call 911 Immediately. Report even minor damage to your supervisor.

If your equipment contacts a power line

1. Move equipment away from the line if you can do so safely.
2. Stay on equipment until utility workers notify you it is safe to exit.
3. Warn others to stay away from the line and anything it is touching; also, the ground nearby may be energized.
4. Have someone call 911 immediately.
5. If you must exit the equipment due to fire or other imminent danger, do NOT touch the equipment and the ground at the same time. Jump clear, land with your feet together, and shuffle at least 30 feet away, keeping your feet close together and on the ground at all times. Do not return to the equipment.

If a power line falls

- Stay at least 30 feet away from the power line and anything it is touching. Instruct others to do the same.
- Even if they don't hum or spark, fallen lines can be dangerous and should always be considered energized.
- Notify 911 immediately.

If someone is shocked

Before approaching an individual who has been shocked, survey the area to ensure they are free from the electricity source, and that there are no energized objects nearby. If safe to do so, administer first aid, including CPR if needed. Get medical help; damage may not be immediately apparent with electrical burns.

STOP LOOK LIVE

To report emergencies, call 911 immediately.
For additional safety information, visit firstenergycorp.com/worksafe.

FirstEnergy
Ohio Edison • The Illuminating Company • Toledo Edison
Met-Ed • Peoples • Penn Power • Jersey Central Power & Light
West Penn Power • Mon Power • Potomac Edison

Culver At- Risk Contractor Mail/Web Outreach Program

■ Contractor Program Methodology Overview

- Annually Culver Company distributes FirstEnergy-branded public safety information to approximately 109,000 at-risk workers in FirstEnergy’s service territory.
- The outreach includes an electric safety poster and detachable visor card that was designed to be hung at the workplace or kept in their vehicles for reference.
- Stakeholders are encouraged to request additional educational materials by either returning a postage-paid business reply card or requesting materials online using the FirstEnergy e-*SMARTworkers* website.

Metric	MD	NJ	NY	OH	PA	VA	WV	Other*	Totals
Stakeholders Mailed To	6,460	22,301	106	33,571	40,475	240	5,948	431	109,532
Total Requests for Materials	39	131	3	288	314	3	55	3	836
Response Rates	0.6%	0.6%	2.8%	0.9%	0.8%	1.3%	0.9%	0.7%	0.8%
Kits Distributed	67	217	4	526	547	5	81	3	1,450
Total Materials Distributed	8,643	29,376	237	50,691	58,293	403	8,595	530	156,768

*Direct mail outreach and/or requests for additional safety materials may include states outside of the service territory due to differences in physical and mailing addresses.

By August 10, 2021, FirstEnergy had received 836 requests for public safety awareness educational materials reaching the 2020 Program Safety Kit Goal of 1450*

CONTRACTOR PROGRAM – SEGMENTED MAILERS

Advanced Segmentation: Using Targeted Outreach to High-Risk Audiences Reduces Incidents, Mitigates Risk, Addresses Regulatory Concerns

Stay safe when installing fiber optic lines:

Find vital safety tips and order FREE safety information inside.

Contact with underground power lines can lead to serious property damage, injuries, and deaths.



FirstEnergy

Ohio Edison • The Illuminating Company • Toledo Edison

Urge your employees to follow the enclosed safety tips when they install fiber optic cable near underground electric lines.

Stay safe when working near overhead power lines:

Find vital safety tips and order FREE safety information inside.

Contact with overhead power lines can lead to serious outages, injuries, and deaths.



FirstEnergy

Met-Ed • Penelec • Penn Power • West Penn Power

Urge your employees to follow the enclosed safety tips when they work near overhead power lines.

Electrical safety information for you and your employees:

Find vital safety tips and order FREE safety materials inside.

Tree workers and landscapers face many risks when removing branches, limbs, and trees.



FirstEnergy

Mon Power • Potomac Edison

Electrocution is a leading cause of fatalities among tree workers. Safety education can reduce the risk.

Repeated, targeted messaging among high-risk audiences increases the relevancy of public safety messaging and helps improve the likelihood that the recipients will read the materials, recall safety messaging, and take steps toward changing unsafe behaviors.

CONTRACTOR PROGRAM – SEGMENTED MAILERS

Advanced Segmentation: Fiber Optics/Directional Drilling

Includes images and content specific to the high-risk audience

Contact with underground power lines can lead to serious property damage, injuries, and deaths.



FirstEnergy[®]

Ohio Edison • The Illuminating Company • Toledo Edison

Stay safe when installing fiber optic lines:

Find vital safety tips and order **FREE** safety information inside.

Safely expose marked utilities

Locate marks are not precisely accurate and never indicate utility depth. You must safely expose buried power lines to verify their exact depth and location. Dig with care until you can see them with your own eyes.

- **Follow state laws for digging within the "tolerance zone."** This safety area spans the width of a marked utility plus a state-mandated distance from each indicated outside edge: 18 inches in Ohio. Do not power dig within this zone; hand dig or use other nonintrusive methods instead.
- **Expose the power line using only hand tools or other nonintrusive methods.** Hand dig with care, using a rounded or blunt-edged shovel. Be sure to use a fiberglass shovel when digging around buried electrical lines.
- **Begin digging off to the side of the marked utility line.** Never pry against a utility line, stab at the soil, or stomp on the shovel with both feet.
- **Only after utilities are safely exposed can you begin power digging.** When you are working near buried utilities, be sure to work with a spotter whose only job is to keep mechanized digging equipment away from buried facilities.
- **Protect all exposed utility lines and check them regularly for damage. Before you backfill, check them again.** Even a slight gouge, scrape, or dent to a utility line or its coating may eventually interrupt service or cause a hazard.

Safe drilling practices



- **Contact your FirstEnergy electric company at 1-888-LIGHTSS to confirm the minimum distance you must maintain** between electric power lines and your drilling/boring equipment.
- **Pothole to the depth of your planned excavation** to confirm the exact depth and location of any buried utilities that cross or parallel your bore path.
- **Use your potholes to watch the drill head cross utility lines** during the initial bore and also during back-reaming to ensure you maintain the required clearance.

#13283-OH © 2022 Culver Media, LLC

CONTRACTOR PROGRAM – SEGMENTED MAILERS

Advanced Segmentation: Overhead Workers

Includes images and content specific to the high-risk audience

Contact with overhead power lines can lead to serious outages, injuries, and deaths.



FirstEnergy
Met-Ed • Penelec • Penn Power • West Penn Power

Urge your employees to follow the enclosed safety tips when they work near overhead power lines.

Stay safe when working near overhead power lines:

Find vital safety tips and order **FREE** safety information inside.

If your equipment contacts a power line

- Move the equipment away from the line if you can do so safely.
- Stay on the equipment until utility workers notify you it is safe to exit.
- Warn others to stay away. Anyone on the ground who touches the equipment may be injured or killed; also, the ground nearby may be energized.
- Have someone call 911 immediately to report the emergency.
- If you must exit the equipment due to fire or other imminent danger, do **NOT** touch the equipment and the ground at the same time. Jump clear, land with your feet together, and shuffle at least 30 feet away, keeping your feet close together and on the ground at all times. Do not return to the equipment.

Never touch fallen power lines. Stay at least 30 feet away from downed distribution lines and 100 feet away from downed transmission lines, as they can energize the ground and nearby objects.



811 Know what's below.
Call 811 before you dig.

STOP. LOOK. LIVE.

#19291-PA © 2022 Culver Media, LLC

CONTRACTOR PROGRAM – SEGMENTED MAILERS

Advanced Segmentation: Tree Trimmers / Landscapers

Includes images and content specific to the high-risk audience

Tree workers and landscapers face many risks when removing branches, limbs, and trees.



FirstEnergy
Mon Power • Potomac Edison

Electrocution is a leading cause of fatalities among tree workers. Safety education can reduce the risk.

Electrical safety information for you and your employees:

Find vital safety tips and order FREE safety materials inside.

Beware of overhead power lines

Consider every power line energized and dangerous, including the service drop that runs from utility poles to buildings. Death or injury can result from contact, even with these low-voltage lines.

- Some wires may look insulated, but any coating only protects the lines from weather; it does not protect you from shock.
 - Always look up for power lines before lifting or moving irrigation pipes and ladders. Carry pipes, ladders, and pruning poles level with the ground.
- Perform a hazard assessment of the work site every day before work begins:
- Walk completely around the tree(s) to be trimmed and the surrounding work area. View the site from all vantage points to spot all potential hazards.
 - Look for overhead power lines, poles, and guy wires hidden by foliage, and point them out to coworkers.

Follow the 10-foot rule

Keep yourself and all tools and equipment at least 10 feet away from power lines up to 50 kV at all times. Higher voltages require greater distances.

- Per OSHA, you may NOT work closer to energized lines unless you are a qualified "line-clearance" tree worker. If you are not qualified, do NOT do the work.
- If you must work in close proximity to power lines or you notice a tree that is in contact with power lines, call your FirstEnergy electric company at 1-888-LIGHTSS well in advance of starting work. They will take steps to help you work safely.

If your equipment contacts a power line



- Move the equipment away from the line if you can do so safely.
- Stay on the equipment until utility workers notify you it is safe to exit.
- Warn others to stay away. Anyone on the ground who touches the equipment may be injured or killed; also, the ground nearby may be energized.
- Have someone call 911 immediately.
- If you must exit the equipment due to fire or other imminent danger, do NOT touch the equipment and the ground at the same time. Jump clear, land with your feet together, and shuffle at least 30 feet away, keeping your feet close together and on the ground at all times. Do not return to the equipment.

Never touch fallen power lines. Stay at least 30 feet away from downed distribution lines and 100 feet away from downed transmission lines, as they can energize the ground and nearby objects.

To report emergencies, call 911 immediately.

For additional safety information, visit firstenergycorp.com/worksafe.

Don't risk it! Use a dedicated spotter



An equipment operator working alone cannot safely judge the distance from the equipment to overhead power lines. Work with a spotter whose only responsibility is to keep you and your equipment a safe distance from overhead lines and other hazards.

When equipment hits an overhead power line, workers on the ground guiding the load are in the most danger. Electricity can travel through the tag line and through you.

Don't risk injury or death by trying to guide a load and spot at the same time. Rely on a dedicated spotter to help keep you clear of power lines.

Notify 811 before you dig

Notify 811 before you dig or move earth in any way, whether you're planting a tree or installing irrigation. This free service will arrange to have underground utility lines marked so that you can dig a safe distance away from them.



Dial 811 or use the online ticket-entry system at wv811.com. Then wait the required time for facility owners to mark their lines before you dig:

- In West Virginia, wait at least 48 hours for utilities to be marked, excluding weekends and federal or state legal holidays.

Pre-mark your proposed excavation area with white paint, flags, and/or stakes before you contact 811.

Leave a tolerance zone of at least 24 inches on either side of the indicated outside edges of buried utility lines. Do not power dig within this zone; hand dig or use other nonintrusive methods instead.

Respect the marks, hand expose to verify location, and dig with care.

If you don't notify 811, you risk hitting an underground power line. You or your coworkers could be hurt or killed. You may be held liable for damages and repair costs.

Always contact your state 811 center before digging and for the most current requirements.

#13282-4W © 2022 Culver Media, LLC

MEASURING PROGRAM IMPACT

Measuring Public Safety Awareness Program Outreach Effectiveness

- **In 2022 FirstEnergy's program will include primary research for Contractor and First Responder stakeholder audiences to assess electrical safety knowledge, behaviors, message recall and communication preferences.**

- ***Goal is to measure impacts and effectiveness of program outreach and identify opportunities for continuous improvement in the following program years.***

- **Telephone surveys will be conducted to measure the following dimensions:**
 - **Reach:** Was the messaging received by the intended stakeholders.

 - **Understandability:** What percentage of stakeholders understood the message. What is the preferred method of delivery of utility public safety awareness messaging.

 - **Impacts on Behavior Change:** Did the outreach influence stakeholders to modify actual or planned behaviors.

 - **Incident Recognition and Response:** What is the stakeholders' knowledge of electric utility incident recognition and response, and the impact the outreach has on improving stakeholder knowledge and behavior change.

 - **Customer Opinion and Satisfaction:** Collect customer opinion and satisfaction metrics from program participants.

K-6 Mail/Web Outreach Program

FirstEnergy

Welcome to the **ELECTRIC UNIVERSE**

Explore electric safety with Louie!

LOUIE'S SPACE
Explore electric safety with Louie!
Click here

Just for Teachers
Great resources for your classroom!
Click here

GAMES
Learn electric safety the FUN way!
Click here

NEW FRONTIERS
Advanced learning for older students
Click here

WISE ENERGY USE
Beat the Power Bandit!
Click here

POWERPLUS
Energy savings and home safety for groups
Click here

Check here for the latest news!
LOUIE'S NEWS

Click Here to Visit Louie's News

ELECTRICAL SAFETY SEARCH™

Home Safety Checklist

Take this worksheet and go through the rooms in your house or apartment. Check items off the list as you go.
See instructions on back.

STOP. LOOK. LIVE.

FirstEnergy

Ohio Edison • The Illuminating Company • Toledo Edison
Met Ed • Pennellco • Perm Power • Jersey Central Power & Light
West Penn Power • Mon Power • Electric Edison

	Safe?	Points
No electrical appliances should be plugged in near the sink.	<input type="checkbox"/>	4
No damaged or frayed cords should be in use.	<input type="checkbox"/>	4
Safety caps are inserted in electrical outlets.	<input type="checkbox"/>	4
Small appliances are turned off and/or unplugged when not in use.	<input type="checkbox"/>	4
Electrical outlets are not overloaded.	<input type="checkbox"/>	4
No electrical appliances are operated near things that can burn.	<input type="checkbox"/>	4
Total points earned		

	Safe?	Points
No damaged or frayed cords should be in use.	<input type="checkbox"/>	4
Electrical cords aren't running under carpets or rugs.	<input type="checkbox"/>	4
Safety caps are inserted in electrical outlets.	<input type="checkbox"/>	4
Electrical equipment is turned off and/or unplugged when not in use.	<input type="checkbox"/>	4
Electrical outlets are not overloaded.	<input type="checkbox"/>	4
Total points earned		

	Safe?	Points
No damaged or frayed cords should be in use.	<input type="checkbox"/>	4
Electrical cords aren't running under carpets or rugs.	<input type="checkbox"/>	4
Safety caps are inserted in electrical outlets.	<input type="checkbox"/>	4
Electrical outlets are not overloaded.	<input type="checkbox"/>	4
Total points earned		

FirstEnergy.electricuniverse.com

Dear Educator,

FirstEnergy is focused on safety. This packet includes information about our new electrical safety program that teaches students about electricity, electrical safety, generation and safe energy use.

Enclosed are samples of program materials. You may order complimentary copies for all your students. To order, please visit FirstEnergy.electricuniverse.com/order-page.html. Most. There. Please. Choose. your. specific. FirstEnergy. electrical. provider. Then. click. the. "Just. for. Teachers." section. to. place. your. order. for. the. free. materials.

The educational program includes safety booklets for your students and a poster for classroom display. The most important piece in the Framework Assignment. Please order enough for every student in your class. Instruct students to take the safety checklist home to complete with their families, then return them signed to you.

After students have completed the assignment, please visit FirstEnergy.electricuniverse.com/framework_assignment.html to report how many students completed and returned the assignment. YOU WILL THEN BE ENTERED IN A DRAWING FOR A \$100 GIFT CARD OR A \$50 GIFT CARD.

FirstEnergy appreciates your commitment to safety education. We hope you will join us in creating a safety-minded generation!

Thank You!
FirstEnergy

If you have questions, please contact us at our Educator Center:
FirstEnergyEducator@firstenergypublication.com

FirstEnergy

Ohio Edison • The Illuminating Company • Toledo Edison
Met Ed • Pennellco • Perm Power • Jersey Central Power & Light
West Penn Power • Mon Power • Electric Edison

Electric UNIVERSE
FREE Interactive Learning Electrical Safety Web Site

FirstEnergy is pleased to provide the Electric Universe website as a FREE service to increase understanding of electrical safety, how electricity works and how it improves the world around us.

Visit FirstEnergy.ElectricUniverse.com today!

STOP. LOOK. LIVE.

STOP. LOOK. LIVE.

FirstEnergy

Here are just a few of the exciting places to visit in the FirstEnergy Electric Universe!

- Louie's Activities**: Learn about the uses of safety where you live, work and play. Play games, watch movies and more!
- Movies**: Louie the Lightning Bug! and Professor See learn you all about electrical safety and science in these great movies!
- Build a Circuit!**: Play a memory game, build a circuit, put together a jigsaw puzzle and build your own kit in the Games section!
- Wise Energy Use**: In this section, find out how you can save the environment, add money to your wallet, you live with the Energy Tracker! Thank you!
- New Frontiers**: More advanced students can explore atoms, weather, the human body, alternative energy sources and electrical safety.
- Activities**: You'll find plenty of activities to do! Includes experiments and references for hours of fun! Includes puzzles, maze, coloring pages and more.
- Just for Teachers**: This section includes helpful experiments and references for hours of fun! Lessons support National Core Curriculum Standards.

K-6 Mail/Web Outreach Program

ELECTRICAL SAFETY SEARCH

In order to find electrical safety hazards, you have to know the rules of safety! Do you know all 12?

To learn more about electricity and electrical safety, visit FirstEnergy.ElectricUniverse.com

FirstEnergy STOP. LOOK. LIVE.

- 1 Don't climb trees near power lines!
- 2 Don't use blow dryers, hair curlers or electronic devices around baths or showers!
- 3 Keep fingers and other objects away from outlets! Only plugs go here!
- 4 Stay away from power lines!
- 5 Don't hang around when power lines are down!
- 6 Never pull a plug out by its cord!
- 7 Never overload outlets with too many plugs!
- 8 Tell an adult if you see someone trimming a tree or working around power lines!
- 9 Keep sailboat masts away from power lines!
- 10 Keep ladders away from power lines!
- 11 Never fly kites, drones or mylar balloons near power lines!
- 12 NEVER HIGH VOLTAGE KEEP OUT Never go near substations!

ELECTRICAL SAFETY SEARCH
Activity Booklet

Featuring Louie the Lightning Bug® and Max Safety

Activities that teach electrical safety for grades K-2

For more safety information, games, movies and more, visit FirstEnergy.ElectricUniverse.com

FirstEnergy STOP. LOOK. LIVE.

Ohio Edison • The Illuminating Company • Toledo Edison
Met-Ed • PennState • Penn Power • Jersey Central Power & Light
West Penn Power • Mon Power • Potomac Edison

ELECTRICAL SAFETY SEARCH
Activity Booklet

FEATURING LOUIE THE LIGHTNING BUG® AND MAX SAFETY

Activities that teach electrical safety for grades 3-4

For more safety information, games, movies and more, visit FirstEnergy.ElectricUniverse.com

FirstEnergy STOP. LOOK. LIVE.

Ohio Edison • The Illuminating Company • Toledo Edison
Met-Ed • PennState • Penn Power • Jersey Central Power & Light
West Penn Power • Mon Power • Potomac Edison

ELECTRICAL SAFETY SEARCH
Activity Booklet

FEATURING MAX SAFETY

Activities that teach electrical safety for grades 5-6

For more safety information, games, movies and more, visit FirstEnergy.ElectricUniverse.com

FirstEnergy STOP. LOOK. LIVE.

Ohio Edison • The Illuminating Company • Toledo Edison
Met-Ed • PennState • Penn Power • Jersey Central Power & Light
West Penn Power • Mon Power • Potomac Edison

Moore Syndication K-6 Mail/Web Outreach Program

■ K-6 Mail/Web Outreach Methodology overview

- Moore Syndication distributes FirstEnergy-branded safety materials directly to more than 5,000 schools within FirstEnergy’s service area.
- Teachers are directed to visit FirstEnergy’s Electric Universe® website, where they can find digital safety teaching materials and order more safety materials that can be ordered through the website.
- An additional 92,000 schoolchildren, grades K-6 have been reached directly through the additional teacher orders.

Reach to Schools by State

State	Number of Schools	Number of Schoolchildren
MD	47	4692
NJ	39	3905
OH	284	29940
PA	318	46212
WV	88	7707
	776	92456

Percentage of Schools Reached

State	Schools in State	Schools Reached in State	Percentage Reached
MD	253	47	18.58%
NJ	757	39	5.15%
NY	6	0	0.00%
OH	1591	284	17.85%
PA	1513	318	21.02%
VA	7	0	0.00%
WV	410	88	21.46%
	4537	776	17.10%

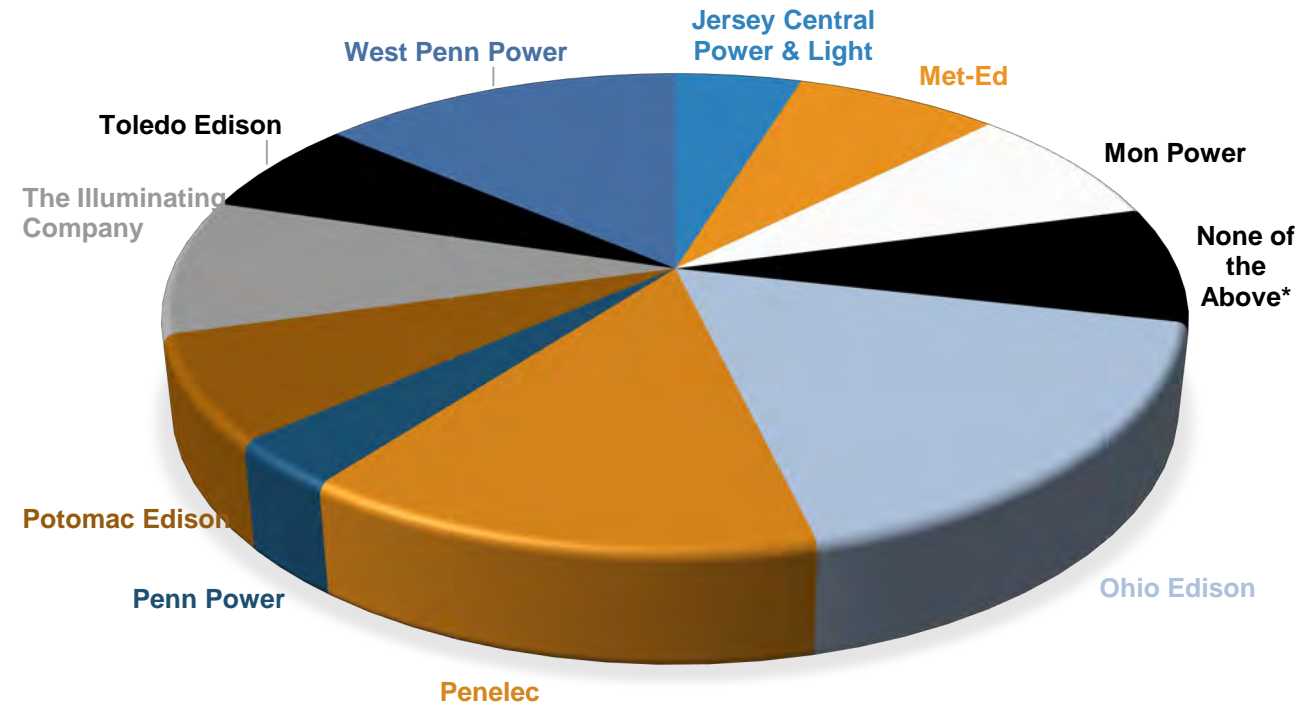
Moore Syndication K-6 Mail/Web Outreach Program

Reach to Schools by Operating Company

Operating Co	Number of Schools	Number of Schoolchildren
Jersey Central Power & Light	37	3739
Met-Ed	60	10770
Mon Power	64	5385
None of the Above*	61	5130
Ohio Edison	137	16374
Penelec	109	15486
Penn Power	25	2625
Potomac Edison	55	5657
The Illuminating Company	71	8710
Toledo Edison	51	3338
West Penn Power	106	15242
	776	92456

* "None of the Above" included A&P Electric, AEP, Duquesne Light, PPL and Ellwood Electric

REACH TO SCHOOLS BY OP CO



<https://drive.google.com/drive/folders/1VHidGcuIYH5BdZ9EbTq1bUCrYwQa8KxT>

First Responder In-Person Program



First Responder In-Person Program



First Responder In-Person Program



First Responder In-Person Program



First Responder In-Person Program

Live Wire Electrical Safety Trailer Owners			
	OpCo	OpCo Leadership (Director or above) Responsible for Live Wire Electrical Safety Trailer	OpCo Trailer Point of Contact (POC)
1	West Penn	Mark Myers	Jack Cole or Tad Bish?
2	Penelec	Brandon Papa	Craig Bean
3	Potomac Edison	Jim Painter	Darren Puffinberger
4	MetEd	Dave Cooper	Tim Rahn
5	OE/PP	Patricia Mullin	Justin Post
6	CEI	Doug Saltz	Eric Leonard
7	MonPower	Mike Haines	Rick Sausen
8	JCPL	Brandon Gibelino	Troy Brier
9	Toledo Edison	Jim Veglia	AJ Hoellrich
10	FirstEnergy	Laura Redenshek	Candy Webb

OpCo Trailer POC is responsible for oversight of Live Wire Electrical Safety Trailer - Coordinates scheduling with External Affairs, coordinates scheduling of OpCo human resources for demonstrations with OpCo leadership, including determination and approval of overtime and/or other resources needed. Completes and routes the Live Wire Electrical Safety Trailer Reservation Form (in development) as indicated.

First Responder In-Person Program

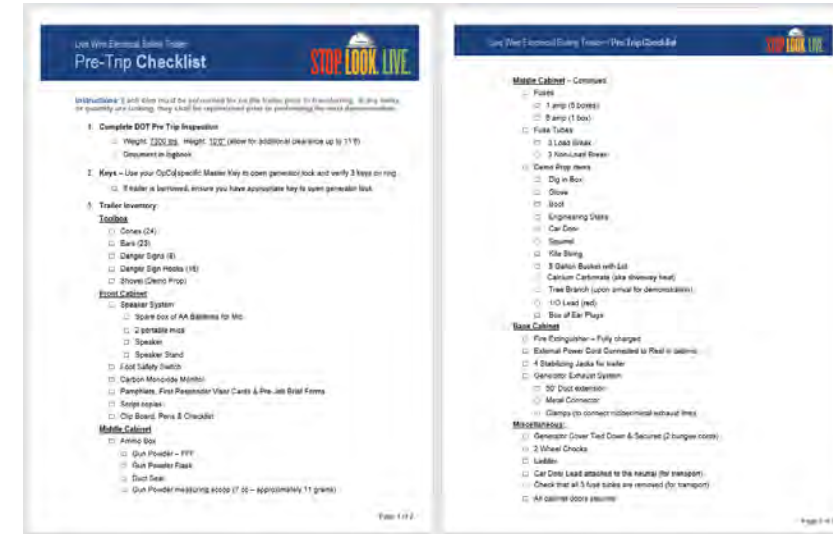
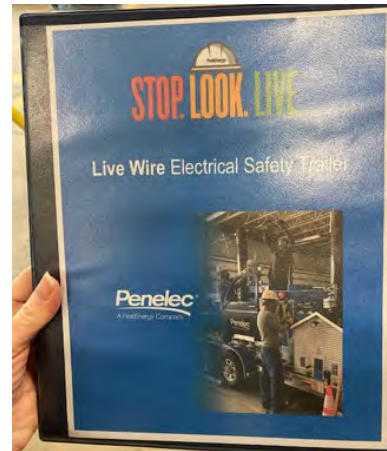
In Person Program Elements - Complete

Checklist

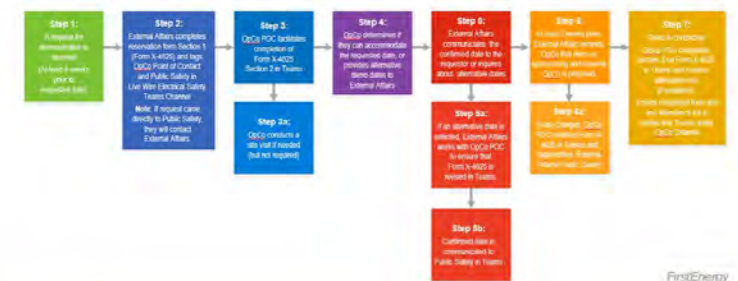
- Pre-Trip/Pick-up
- Pre-Operational
- Post-Trip
- PA System Document
- CO Document
- Black Powder Document

Consistent Script

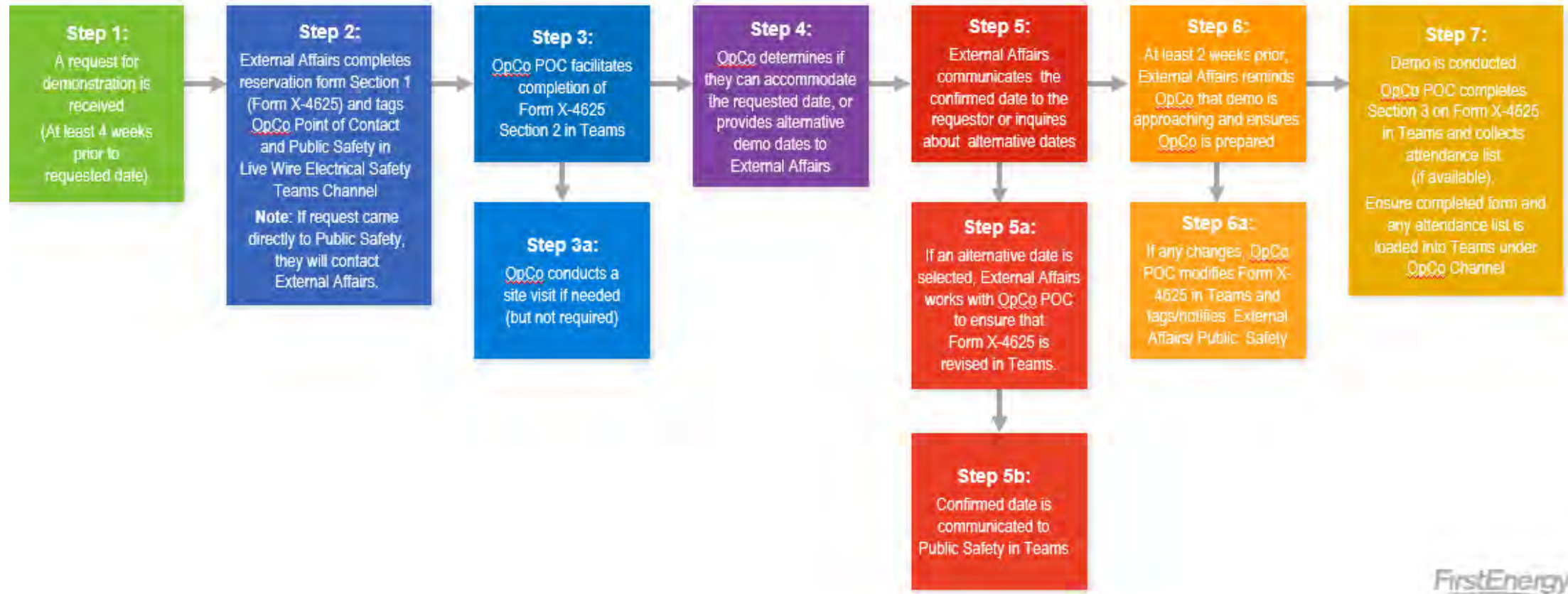
- Training Program and Course Code
- Process for Requesting and Scheduling
- First Responder Visor - Internal



Process for Requesting and Scheduling a Live Wire Electrical Safety Trailer Demonstration



Process for Requesting and Scheduling a Live Wire Electrical Safety Trailer Demonstration



First Responder In-Person Program

FirstEnergy Safety Demonstration Trailer Reservation
Form X-4625 (04-21) Page 1 of 2

WE HAVE THE POWER TO KEEP EACH OTHER SAFE

SECTION I – COMPLETED BY EXTERNAL AFFAIRS

Section 1 Instructions: Complete at least 2 weeks prior to event, forward to OpCo Point of Contact to complete Section 2. If requested date is not suitable for Operating Company, External Affairs works with Requestor to determine a mutually agreeable date.

APPLICABLE OPERATING COMPANY: _____ REQUESTED DATE AND TIME OF EVENT: _____

DEMO REQUESTED BY (NAME): _____ FE EMPLOYEE OUTSIDE ENTITY

REQUESTOR PHONE NO.: _____ EMAIL: _____

EVENT REQUESTED FOR (ORGANIZATION NAME): _____

LOCATION OF EVENT (ADDRESS): _____ COUNTY OF EVENT LOCATION: _____

AUDIENCE TYPE (EX: FIREFIGHTERS, POLICE, EMS, DOT, INTERNAL FE EMPLOYEES, ETC.): _____

APPROXIMATE NUMBER OF DEMONSTRATION ATTENDEES: _____ NUMBER OF DEMONSTRATIONS REQUESTED: _____

FE EXTERNAL AFFAIRS REPRESENTATIVE (NAME): _____ OPCO SERVICE CENTER RESPONSIBLE FOR EVENT: _____

IS THE EVENT: INDOORS OUTDOORS IF OUTDOORS, IS THERE A FLAT SPACE TO HOLD (HEIGHT/LENGTH) PLUS CROWD? YES NO

IF INDOORS, IS THERE A CLEARANCE OF AT LEAST 11" 8" (HEIGHT) AND 30" (LENGTH) TO PULL TRAILER INTO? YES NO

OTHER EVENT NOTES: _____

SECTION II – PRESENTATION INFORMATION (FACILITATED BY OPCO POINT OF CONTACT)

SERVICE CENTER CONTACT (SUPERVISOR/MANAGER) (NAME): _____

ELECTRICALLY QUALIFIED PERSON #1 (REQUIRED) _____ TRAINING VERIFIED: YES NO

ELECTRICALLY QUALIFIED PERSON #2 (REQUIRED) _____ TRAINING VERIFIED: YES NO

FACILITATOR (DOES NOT HAVE TO BE ELECTRICALLY QUALIFIED) (REQUIRED) _____ TRAINING VERIFIED: YES NO

EXTERNAL AFFAIRS REPRESENTATIVE (SHOULD ATTEND IF POSSIBLE BUT NOT REQUIRED) _____

OTHER: _____ TRAINING VERIFIED: YES NO

OTHER: _____ TRAINING VERIFIED: YES NO

TOTAL NUMBER OF HOURS FOR PRESENTATION (INCLUDING ROUNDTRIP TRAVEL, SETUP, DEMO, ETC.): _____

IS OVERTIME REQUIRED? YES NO IF YES, ESTIMATED NUMBER OF OVERTIME HOURS (PER PERSON): _____

OTHER OUTREACH MATERIALS TO REQUEST (EX: TRINKETS OR PAMPHLETS TO DISTRIBUTE): YES NO IF YES, TOTAL COST: _____

APPROVALS (ROUTED BY OPCO POINT OF CONTACT)

MANAGER APPROVAL OF ALL EMPLOYEES INVOLVED IN PRESENTATION (EXCLUDING EXTERNAL AFFAIRS)

1. _____ VERBAL VIA EMAIL

2. _____ VERBAL VIA EMAIL

3. _____ VERBAL VIA EMAIL

4. _____ VERBAL VIA EMAIL

MANAGEMENT OVERTIME APPROVAL (IF OVERTIME REQUIRED) (NAME): _____ VERBAL VIA EMAIL

EXTERNAL AFFAIRS WILL COMMUNICATE WITH REQUESTING ORGANIZATION TO FINALIZE SCHEDULING AND COORDINATE WITH THE OPCO POINT OF CONTACT

SEE PAGE 2

FirstEnergy Safety Demonstration Trailer Reservation
FORM X-4625 (04-21) Page 2 of 2

WE HAVE THE POWER TO KEEP EACH OTHER SAFE

SECTION III – COMPLETED BY FIRSTENERGY PERSONNEL DURING DEMONSTRATION

DATE: _____ TIME: _____ NUMBER OF ATTENDEES: _____

MATERIALS DISTRIBUTED: FIRST RESPONDER CARDS PUBLIC SAFETY PAMPHLETS OTHER: _____

ATTENDANCE LIST AVAILABLE? YES NO (IF YES, PLEASE REQUEST A COPY AND ATTACH WITH THIS FORM)

FIRSTENERGY PERSONNEL PRESENT DURING DEMONSTRATION:

ELECTRICALLY QUALIFIED PERSON #1 (REQUIRED) _____

ELECTRICALLY QUALIFIED PERSON #2 (REQUIRED) _____

FACILITATOR (DOES NOT HAVE TO BE ELECTRICALLY QUALIFIED) (REQUIRED) _____

EXTERNAL AFFAIRS REPRESENTATIVE (SHOULD ATTEND IF POSSIBLE BUT NOT REQUIRED) _____

OTHER: _____

OTHER: _____

TIME CODING: CODE TIME TO STAT ORDERS OR WBS

FOR ELECTRONIC USERS, SELECT FROM DROP-DOWN LIST HERE: _____

FOR HANDCOPY USERS, SELECT FROM LIST BELOW:

171413 – OE/PP SAFETY TRAILERS	171418 – PN SAFETY TRAILERS
171414 – CEI SAFETY TRAILERS	171419 – JCP&L SAFETY TRAILERS
171415 – TE SAFETY TRAILERS	171420 – MP SAFETY TRAILERS
171416 – MET-ED SAFETY TRAILERS	171421 – PE SAFETY TRAILERS
171417 – WPP SAFETY TRAILERS	171422 – CORP SAFETY TRAILERS

NOTES: _____

➡ROUTE COMPLETED FORM TO livewire@firstenergycorp.com, EXTERNAL AFFAIRS, AND OPCO POINT OF CONTACT➡

Live Wire Electrical Safety Trailer Owners

OpCo	OpCo Leadership (Director or above) Responsible for Live Wire Electrical Safety Trailer	OpCo Trailer Point of Contact (POC)
1 West Penn	Mark Myers	Tad Bish
2 Penelec	Brandon Papa	Craig Bean
3 Potomac Edison	Jim Painter	Darren Puffinberger
4 MetEd	Dave Cooper	Tim Rahn
5 OE/PP	Patricia Mullin	Justin Post
6 CEI	Doug Saltz	Eric Leonard
7 MonPower	Mike Haines	Rick Sausen
8 JCPL	Brandon Gibellino	Troy Brier
9 Toledo Edison	Jim Veglia	AJ Hoellrich
10 FirstEnergy	Laura Redenshek	Candy Webb

First Responder In-Person Program

IF A VEHICLE IS INVOLVED with a downed power line, follow these steps:

- Do NOT approach, touch or enter the vehicle; doing so puts you at risk of electric shock and may be fatal.
- Instruct the occupant(s) to drive the vehicle away from the line if they can do so safely.
- If the vehicle cannot be safely moved, instruct the occupant(s) to **STAY INSIDE** until electric utility crews give the all clear. Staying in the vehicle is their best protection against electric shock and injury.
- If the occupant(s) are in imminent danger from fire or other hazards, stay away and instruct them to jump clear without touching the vehicle and the ground at the same time. They must land with feet together and shuffle at least 30 feet away, keeping both feet close together and on the ground at all times. Demonstrate the proper procedure from a distance.
- If anyone in the vehicle is injured, disabled or unable to safely exit the vehicle, your incident commander will tell you how to proceed.



ELECTRICAL METER SAFETY

- Do NOT pull meters. Only the power company should ever attempt to remove the meter. Pulling electrical meters could result in fatality.



For more safety information, visit
FirstEnergyCorp.com/firstresponders

FirstEnergy

Ohio Edison • The Illuminating Company • Toledo Edison
Met-Ed • Penelec • Penn Power • Jersey Central Power & Light
West Penn Power • Mon Power • Potomac Edison

Electrical Safety for First Responders



Keep this card readily accessible in your vehicle visor as a quick reference guide.

POWER LINE SAFETY

- Upon arrival at every incident scene, **SURVEY THE AREA** for overhead power lines, poles and equipment.
- Park emergency vehicles **AS FAR FROM OVERHEAD LINES AS POSSIBLE**.
- **HAVE A SPOTTER** monitor the placement of ladders and aerial equipment to ensure they remain a safe distance away from power lines when fully extended.
- **BE PREPARED FOR THE UTILITY VEHICLE TO ARRIVE**, and make sure there is a clear path to the incident site for utility personnel.



SUBSTATION FIRE SAFETY

- Burning electrical equipment cannot be repaired; therefore, the **safest course of action** is to **LET IT BURN**.
- **NEVER ATTEMPT TO ENTER A SUBSTATION** without utility personnel present. Contact 911 (dispatch) immediately and request electric utility personnel to respond.
- **ISOLATE THE AREA** at least 300 feet in all directions. Keep unauthorized persons away.
- Electrical equipment contains oil and potentially other hazardous materials. **BE ALERT FOR EXPLOSIONS AND TOXIC SMOKE**; stay upwind.
- **MONITOR FOR OIL RUNOFF**. Direct any oil away from catch basins, surface waters and wetlands.
- If an **EQUIPMENT FIRE** must be suppressed, utility personnel and the incident commander will tell you how to proceed.

COMM9549-07-21-CV-GS

Produced by FirstEnergy's Communications and Branding Department

First Responder In-Person Program

DOWNED POWER LINES

- Upon arrival at every incident scene, **SURVEY THE AREA** for confirmed downed power lines.
- Park emergency vehicles **AS FAR FROM OVERHEAD LINES AS POSSIBLE**.
- **NEVER** attempt to touch or move a power line under any circumstances as it could be **FATAL**.
- **CALL 911 (DISPATCH) IMMEDIATELY** and advise of downed power line. Request the utility company to respond.
- **SECURE THE AREA** and keep yourself and the public at least **30 FEET AWAY** from fallen power lines and **100 FEET AWAY** from large transmission lines.
- **WAIT** for your electric utility personnel to arrive.



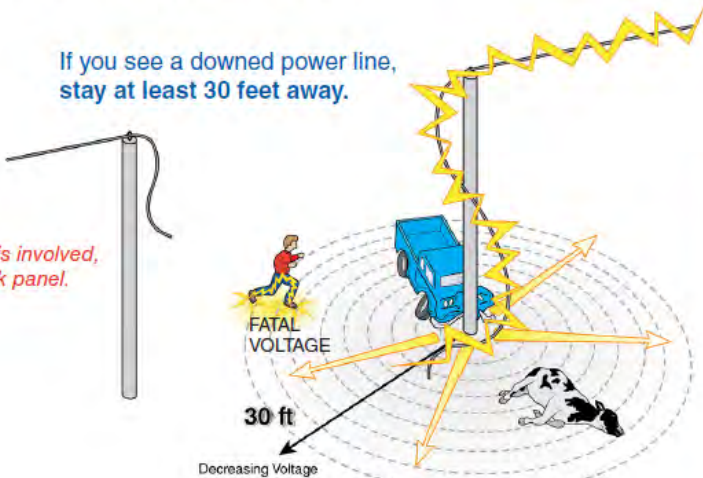
ENERGIZED ITEMS MAY INCLUDE:
Vehicles
Fences
Ladders
Trees
People



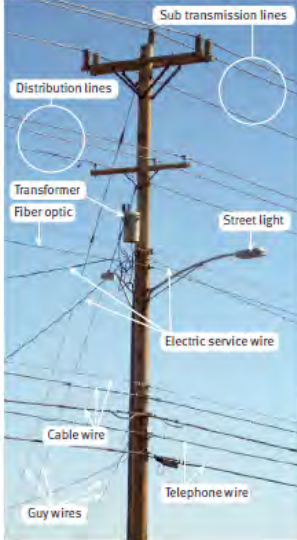
CONDUCTIVE MATERIALS:
Metal
Water
Human Body
Smoke
Wood
Rope

If you see a downed power line, stay at least 30 feet away.

If a vehicle is involved, see the back panel.



Distribution Pole



Transmission Tower



Assume **ALL LINES (including communication lines) are energized and fatal if contacted.** Utility personnel will evaluate and communicate when lines are de-energized.

POLE OR TRANSFORMER FIRES

- **LET IT BURN AND STAY AWAY.**
- **DO NOT SPRAY WATER** onto burning electrical equipment.
- Secure surrounding areas.
- Stay as far away as possible.
- Poles could snap, power lines could burn and fall.



Pad-mount Transformer



First Responder In-Person Program



First Responder In-Person Program



First Responder In-Person Program

- **CEI provided safety outreach to over 100 Cleveland Fire Department Cadets**



First Responder In-Person Program

■ Toledo Edison Testimony

Thank you for making us aware of the Toledo Edison training on November 10.

Several members of our department -- including me -- were able to attend this event. It sparked -- pun somewhat intended -- a discussion in our fire house about our operations.

We immediately made changes to some of our procedures because of what we learned from First Energy.

Your combined efforts have better poised us to save lives without needlessly endangering our own in the process -- and one can only imagine how many lives will be positively affected by this training.

Respectfully,

Barrett A. Dorner, BS, NRP

Fire Chief

Portage Fire District

Station: 419-898-3109

Cell: 567-400-2388

School Age In Person Outreach Program



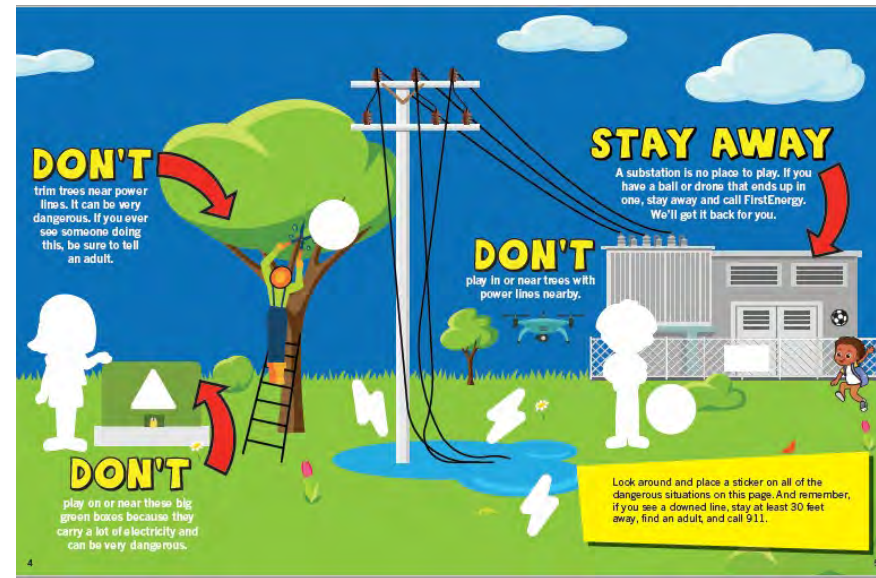
<https://vimeo.com/466298444/dec6e68752>

School Age In Person Outreach – Activity Book

Meet Max and his Crew

I'm Max Safety, a lineman at FirstEnergy—the company that sends electricity to your house. These are my friends, the Cautious Crew*. We're here to show you how three words can help you stay safe around electricity.

- STOP—Stay away from electrical equipment.
- LOOK—Find a safe location and call 911 immediately.
- LIVE—Being aware can save your life.



Live Wire Electrical Safety School – Pilot

Toledo Edison at Safety City

4 sessions
160 Pre-K Kids

Volunteers
Brad Gillespie
Darren Puffinburger
Scott Morris
Matt Tussing

SAFETY CITY

Public Safety 2021 Strategic Plan Update

■ Expanded Public Safety Media Campaign – Stop.Look.Live

- FirstEnergy was recognized at the PRSA (Public Relations Society of America) Cleveland Rocks Awards for their outstanding PR and communications work. The Stop. Look. Live. with Max Safety Campaign won two silver awards in the following categories:
 - Community Relations Campaign
 - Integrated Communications Campaign



Public Safety 2021 Strategic Plan Update



Expanded Public Safety Ad Campaign Live – June 7 (2nd Round)

- **Timing:** June 7 – December 12
- **Target Audience:** Customers across all service area
- **Tactics:**
 - Digital: display, video, native, streaming audio
 - :30 Radio: broadcast & Cleveland Indians
 - Billboards: digital & posters
 - Paid Social Media – Facebook, Twitter, YouTube

- **Media Markets:**

OH

- Akron
- Cleveland
- Toledo
- Youngstown

PA

- Altoona
- Erie
- Harrisburg
- Pittsburgh
- Reading
- York

MD

- Frederick
- Hagerstown

NJ

- Monmouth
- Morristown
- Middlesex
- Sussex

WV

- Beckley
- Bluefield
- Charleston
- Huntington
- Morgantown
- Parkersburg
- Wheeling

Billboards



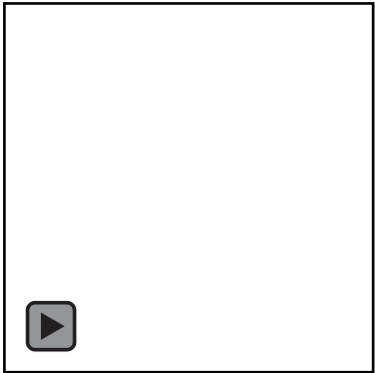
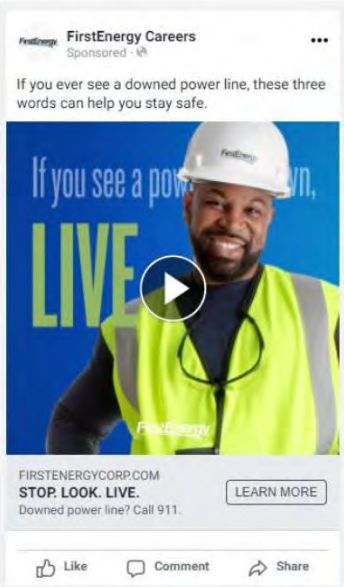
Digital Ads



Digital Video



Paid Social



Envelope- May 2021

OhioEdison
A FirstEnergy Company

PRESORTED
FIRST-CLASS MAIL
US POSTAGE PAID
FIRSTENERGY
CORP

STOP. LOOK. LIVE.

We value **your safety.**

IMPORTANT:
Electric Bill is Enclosed.

STOP. LOOK. LIVE.

Call 911 immediately to report a downed power line.



If you see a downed power line:

- Stay at least 30 feet away and **call 911 immediately.**
- **Don't touch anything** it's in contact with.
- **Always assume** power lines on the ground or overhead are **energized and dangerous.**
- Get more electrical safety tips at www.firstenergycorp.com/publicsafety.

Quarterly Bill Inserts



STOP. LOOK. LIVE.

These three words can help you stay safe around electricity.



Winter weather can bring electrical safety hazards, including downed power lines. If you ever see a power line down – or anywhere but strung between two poles – call 911 immediately and follow these three simple steps to avoid dangerous accidental contact with electrical equipment:

STOP Stay at least 30 feet away. Electricity can travel through anything it touches, including the ground.

LOOK for a safe location and call 911 immediately.

LIVE Always assume power lines are energized and dangerous.

There is nothing more important than your safety. For more information on electrical safety tips, visit www.firstenergycorp.com/publicsafety.

FirstEnergy

Ohio Edison • The Illuminating Company • Toledo Edison
Met-Ed • Penelec • Penn Power • Jersey Central Power & Light
West Penn Power • Mon Power • Potomac Edison

COMM9474-10-20-AI-S3M

STAYING SAFE NEAR HIGH-VOLTAGE TRANSMISSION LINES

Transmission lines play an important role in delivering power to your community, and keeping the rights-of-way around this high-voltage equipment free of structures and obstructions protects your safety and supports reliability.



STOP. LOOK. LIVE.

These three words can help you stay safe around electricity.



Because they can pose safety risks, the following structures – even if temporary – are prohibited within the transmission rights-of-way. Some examples include:

- Any structure attached to a transmission tower or power poles.
- Structures blocking access or located too close to facilities.
- Structures underneath high-voltage lines such as:
 - Swimming Pools
 - Houses
 - Decks and Patios
 - Buildings, Barns and Sheds
 - Playground Equipment
 - Hunting Stands

For more information, or to request written consent for work along FirstEnergy rights-of-way, visit FirstEnergyCorp.com/PublicSafety-ROW.

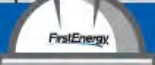
For tips on staying safe around electricity, visit FirstEnergyCorp.com/PublicSafety.

FirstEnergy

Ohio Edison • The Illuminating Company • Toledo Edison
Met-Ed • Penelec • Penn Power • Jersey Central Power & Light
West Penn Power • Mon Power • Potomac Edison

COMM9550-04-21-AI
Produced by FirstEnergy's Communications & Branding Department

Quarterly Bill Inserts

STOP. LOOK. LIVE.

Working Safely with Ladders
Near Power Lines.

Contacting overhead power lines is the leading cause of death involving electricity. Getting too close to an overhead line with a ladder when cleaning gutters, painting, performing roof repairs, putting up antennas or hanging holiday decorations can be a dangerous – or even deadly – mistake.



Remember these three words to help you stay safe:

- STOP** Always be aware of your surroundings, especially when working outside.
- LOOK** Know where the power lines are located and make sure any object you're holding won't get close to or touch an overhead line.
- LIVE** Keep all ladders and other tools in the safe zone, at least 10 feet from any overhead power lines. Always make sure that, if the ladder falls, it would not contact any power lines or other electrical equipment.

For tips on staying safe around electricity, visit firstenergycorp.com/publicsafety

FirstEnergy

Ohio Edison • The Illuminating Company • Toledo Edison
Met-Ed • Penelec • Penn Power • Jersey Central Power & Light
West Penn Power • Mon Power • Potomac Edison

COMM9648-10-21-AI-S3M
Produced by FirstEnergy's Communications and Branding Department




STOP. LOOK. LIVE.

Enjoy Flying Drones Safely by
Following These Tips

Today, there are hundreds of thousands of unmanned aerial vehicles (UAVs), or drones, sharing the airspace above our communities. While drones can be safe when used correctly, flying drones close to wires, substations or other electrical equipment may cause serious damage and pose significant safety risks to you and those nearby.

If your drone does veer off course and crash near or into FirstEnergy equipment, never try to retrieve it yourself.

Call 888-LIGHTSS (888-544-4877), and we'll help you retrieve it safely.

Always keep yourself and others safe when flying your drone by remembering these tips:

- Non-commercial pilots should complete the FAA's Recreational UAS Safety Test (TRUST).
- Commercial Drone Pilots are required to be certified.
- Follow manufacturer guidance on equipment limitations.
- Do not fly in dark, windy, or wet weather conditions.
- Register your drone with the Federal Aviation Administration.
- Fly your drone at or below 400 feet.
- Keep your drone where you can see it.
- Stay at least 200 feet away from power lines or other electrical equipment.
- Never try to get your drone if it crashes near a power line or substation.

For more tips on staying safe around electricity and near power lines and equipment, visit FirstEnergy's "Stop. Look. Live." safety website at firstenergycorp.com/publicsafety

FirstEnergy

Ohio Edison • The Illuminating Company • Toledo Edison
Met-Ed • Penelec • Penn Power • Jersey Central Power & Light
West Penn Power • Mon Power • Potomac Edison

COMM9648-10-21-AI-S3M
Produced by FirstEnergy's Communications and Branding Department

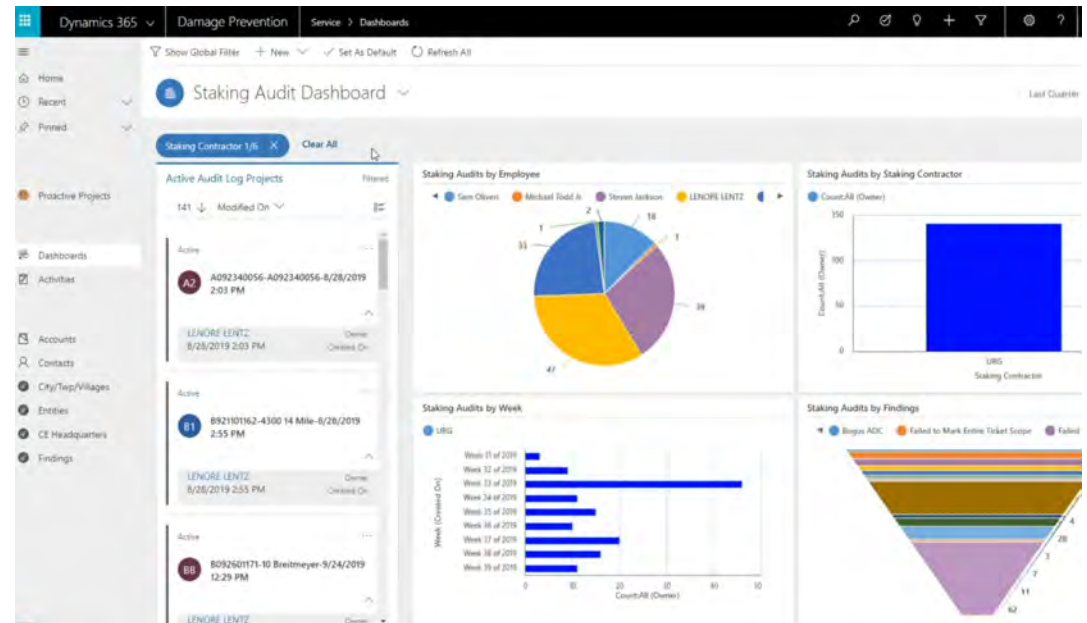
Public Safety Tracking Software – Phase 1 & 2 Live

Dynamics 365 | Public Safety Application | Public Safety > Institutions | **SANDBOX**

Show Chart | + New | Delete | Refresh | Email a Link | Flow | Run Report | Excel Templates | Export to Excel

All Institutions

Institution Name	Institution Type	Main Phone	City	Primary Contact	Email (Primary Contact)	Status
- BEDFORD HEIGHTS, OH	First Responder	440-786-3222	BEDFORD HEIGH...	MAROTTA, MIKE	---	Active
167TH AV FIRE DEPT EWAVRA SHEPH	First Responder	304-616-5753	MARTINSBURG	GENGLER, JEFF	---	Active
1ST CONSOLIDATED FIRE DIST - CALEI	First Responder	419-845-3332	CALEDONIA	CANTERBURY, CLINT	---	Active
7TH WARD AMBULANCE SVC - JOHN	First Responder	814-536-5176	JOHNSTOWN	BRAWLEY, MICHAEL	---	Active
911 COMMUNICATION CTR - PARSON	First Responder	304-478-3927	PARSONS	STEMPLE, DARLA	---	Active
911 RESTORATION OF CLEVELAND -	First Responder	440-387-4701	NORTH ROYALT...	---	---	Active
A V R FIRE DIST - ATTICA OH	First Responder	419-426-8862	ATTICA	JAYNES, LONNIE	---	Active
AAALS ADVANCED AIR AMBULANCE -	First Responder	800-633-3590	WALL TOWNSHIP	---	---	Active
ABERDEEN TOWNSHIP FIRE CMSSN	First Responder	732-566-8920	CLIFFWOOD	CHEVALIER, GEORGE	---	Active
ABERDEEN TOWNSHIP FIRE DIST - M	First Responder	732-566-4172	MATAWAN	AUREMMA, LOUIS	---	Active
ABERDEEN TWP HOSE & CHEMICAL C	First Responder	732-566-3704	ABERDEEN	MOCCI, JOHN	---	Active



Dynamics 365 | Public Safety Application | Public Safety > Institutions > - BEDFORD HEIGHTS, OH | **SANDBOX**

Summary | Outreach | Related

- BEDFORD HEIGHTS, OH
Institution | 440-786-3222 | The Illuminating Company | BEDFORD HEIGHTS, CUYAHOGA COUNTY, OH

INSTITUTION INFORMATION

Institution Name	- BEDFORD HEIGHTS, OH
Phone	440-786-3222
Fax	---
Website	---
Operating Company	The Illuminating Com...
Outreach Program	---
Parent Institution	BEDFORD HEIGHTS, C...
Institution Type	First Responder
SIC	---

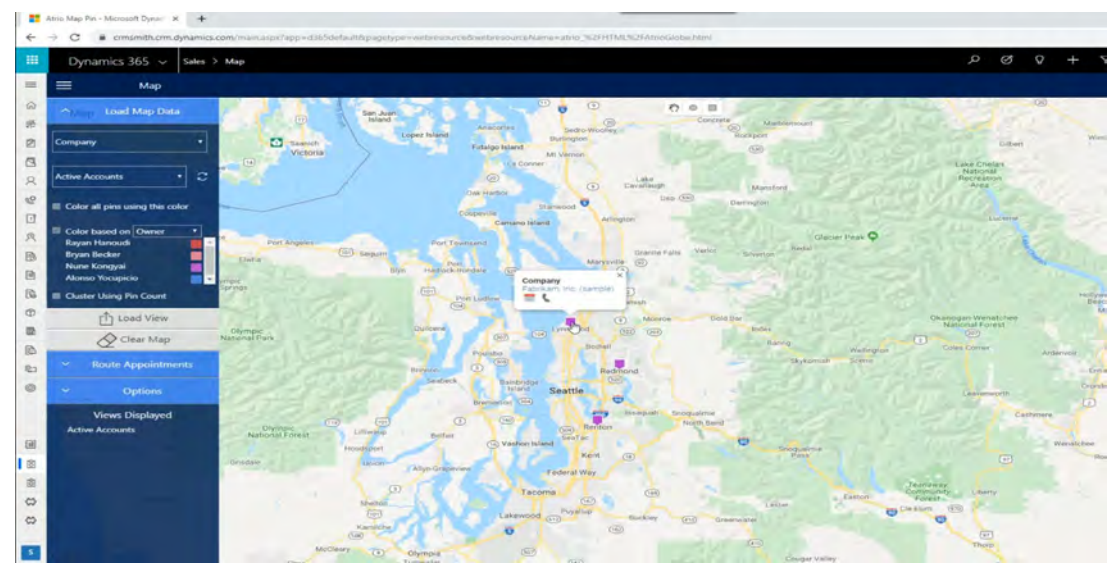
Timeline

- 4/16/2020: Mailer from Matthew Mickas, First Responder Mailer - 2020
- 4/15/2020: Auto-post on - BEDFORD HEIGHTS, OH, Account Created By Matthew Mickas

Relationship Assistant

Primary Contact: **MAROTTA, MIKE**

Contacts: MAROTTA, MIKE



First Responder In-Person Program

- **Recruit employee volunteers for in-person outreach programs**
 - 307 Trained employee volunteers
 - Additional training classes requested (OE & PE)



Employee Volunteers

OPCO	# of Volunteers
JCP&L	32
ME	17
MP	32
OE	30
PN	28
PP	1
PE	56
CEI	16
TE	33
WPP	46
Other (FE)	16
Totals	307

FirstEnergy's Strategic Plan - 2022

Planning Objective	Tactical Plan	FORWARD VISION
EXCELLENCE IN PUBLIC SAFETY		
<p>Develop a consistent approach to public safety outreach across our service territory</p>	<ol style="list-style-type: none"> 1. Implement public safety awareness campaign regarding the dangers surrounding drone flights near power lines and equipment 2. Implement public safety portion of transmission right-of-way encroachment communications plan 3. Produce and implement the following public safety videos: <ul style="list-style-type: none"> – Live Wire Electrical Safety Trailer Demonstration – Top 10 Electrical Safety Tips – Step Potential / Downed Wire on Vehicle 3. Develop consistent public safety incident reporting process, including reported near misses, following <i>FE Forward</i> centralization of DCC and Claims 5. Implement in-person K–6 public safety outreach programs or develop and implement virtual programming (pending COVID-19 protocol) 6. Implement Record of Warning Program 	<p>We have a proactive public safety program that protects human life, educates our customers and eliminates exposure for any member of the public who may come near our facilities.</p>

Public Safety 2022 Strategic Plan – Drone Campaign



Activation Tactics

FirstEnergy Public Safety Campaign

©2021 EPC. All Rights Reserved. 

Public Safety 2022 Strategic Plan – Drone Campaign



Public Safety 2022 Strategic Plan

■ Implement Public Safety Incident Notification Process

- Following FE Forward centralization of DCC and Claims a consistent public safety incident reporting process will be developed
- Currently notifications to Public Safety following all contact cases have been anchored in current OPCO specific processes.
 - DCP-EOP-004

FirstEnergy Distribution Control Center, Emergency Operating Procedure
DCC Communication Protocol for an Electrical Contact, Injury or Death involving the Public and FirstEnergy Facilities
DCC-EOP-004 Rev. 1 Effective Date: Jan 1, 2016

PROPRIETARY AND SENSITIVE MATERIAL

Purpose
The purpose of this document is to define a consistent procedure for communicating information relative to an electrical contact, injury or death involving the public and FirstEnergy facilities which the Distribution Control Center (DCC) becomes aware through communication with the field or external sources.
This procedure does not supersede existing processes for communication of a safety incident involving FE employees. In those cases, existing protocols should be followed.

Procedure Details
The DCC, when aware that an electrical contact, injury or death involving the public and FirstEnergy facilities and/or equipment has occurred shall notify at a minimum, the roles specified below so the company can respond in the appropriate manner.

- Dispatch available field resource to the scene
- Notify the Operating Company Claims Manager/Unit that an electrical contact, injury or death involving the public and FirstEnergy facilities has occurred
- Notify the appropriate field Supervisor and dispatch them to the scene
- Notify the appropriate field Manager
- Notify the DCC Manager

Related Documents

Title
Claims Processing Manual Section P-2

Revision History

Rev. No.	Date	Name	Comments/Change Description
0	11/01/2015		Original issue
1	01/01/2016		

Approvals

Role	Signature
Procedure Preparer	Approval Signatures not required
DCC Support Manager	John Daugherty

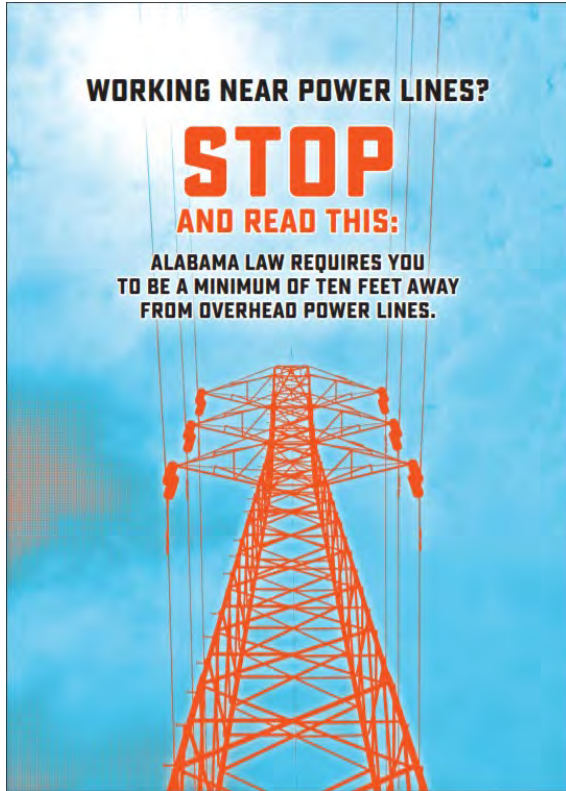
PROPRIETARY AND SENSITIVE MATERIAL Page 1 of 1

Record of Warning – FirstEnergy Utilities 2022 Strategic Plan

- **Federal regulations (and some state statutes)** provide specific safety requirements for being around power lines and were enacted to protect workers and the public from injury and death.
 - These laws apply to employers working on or around power lines or other energized equipment.

- **What is a Record of Warning program?**
 - A program that will provide a means for authorized FirstEnergy employees to initiate a discussion with customers, the public, or private businesses when work is or will be occurring in the vicinity of FirstEnergy’s electric transmission or distribution facilities, lines, or equipment.

Record of Warning Benchmarking – Alabama Power



ALABAMA CODE 37-8-52 & 53
 The law requires precautions that must be taken by employers and all others before undertaking any action or object that will come within ten feet of an overhead power line. A violation of this law is a misdemeanor punishable by fine up to \$500 or imprisonment of up to twelve months or both.

EQUIPMENT
 No person will use, operate, place, erect or move any tools, machinery, equipment, apparatus or material within ten feet of overhead conductors. A person shall not move any building or other structure within ten feet of a high voltage line (750 volts or more) except when a person has arranged effective safeguards against accidental contact with a conductor of electricity by either:

SAFEGUARDS

- Erecting mechanical barriers which will prevent physical contact with overhead conductors
- De-energizing or grounding the high voltage conductors
- Temporary or permanent relocation of high voltage conductors

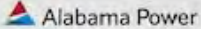
WARNING SIGNS
 Anyone who operates or employs someone to operate a crane, derrick, power shovel, drilling rig, pile driver, or like apparatus which is capable of vertical, lateral or swinging motion must place a warning sticker in view of the operator that states it is unlawful to operate this equipment within ten feet of overhead high voltage lines. Failure to place a warning sign is a misdemeanor punishable up to \$500 fine and imprisonment of no more than twelve months. Each day's failure to post a sign constitutes a separate offense.

The purpose of this law is for the preservation and safety of public health to prevent injury and death and damage to property.

**ALWAYS
BE AWARE
OF YOUR
SURROUNDINGS**

**ALWAYS
KNOW THE
RULES**





Warning Notice - Serious injuries could result to you or others if you contact or come too close to electric facilities. If work must be performed in the vicinity of electric facilities, obtain assistance from your local Alabama Power Company office. Refer to the back of this warning notice for information concerning Alabama State law and possible OSHA requirements.

Name of Operation named:	
Street Location/Description:	
Employee:	
Employer Address:	
Date of Warning:	Time: AM / PM
Division:	
District:	
Distance of Overhead Wires:	Nominal Voltage (To comply with OSHA Standard 29 CFR 1926.1407-1411)
Type of Equipment:	
License or Number:	
Remarks:	
Was Safety Warning (Form 5-6994) and/or Other Literature Distributed? <input type="checkbox"/> Yes <input type="checkbox"/> No	
Was Warning Sticker (Form 5-6351) provided to Customer for Attachment to Equipment in a Visible Location? <input type="checkbox"/> Yes <input type="checkbox"/> No	
Did you attach Warning Sticker (Form 5-6351) to Equipment in a Visible Location? <input type="checkbox"/> Yes <input type="checkbox"/> No	

By signature below, I certify that I have presented a Warning Notice as stated above.

Name: _____

Dept: _____

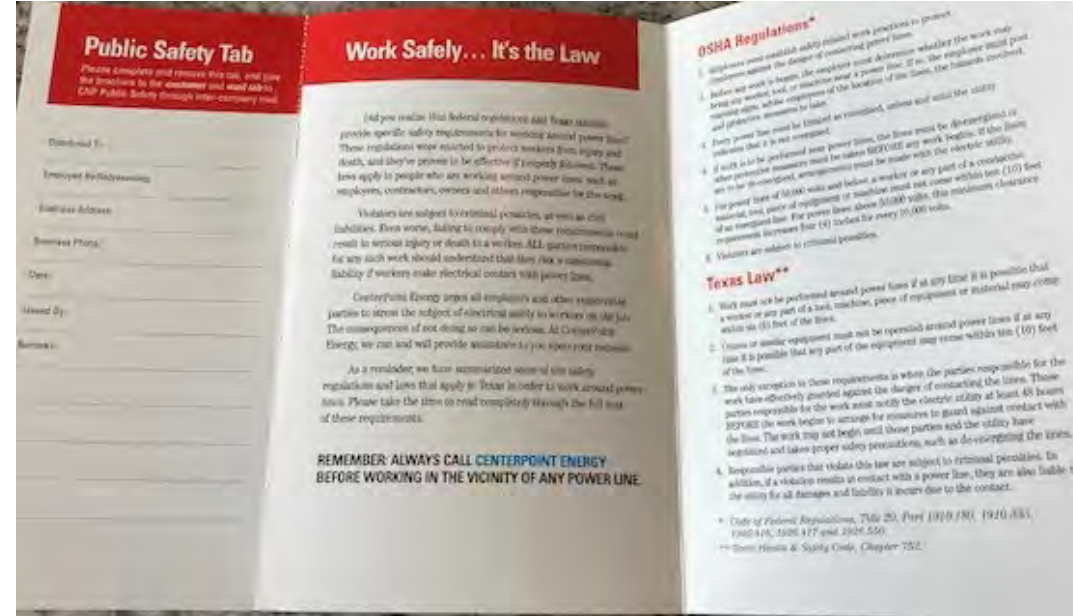
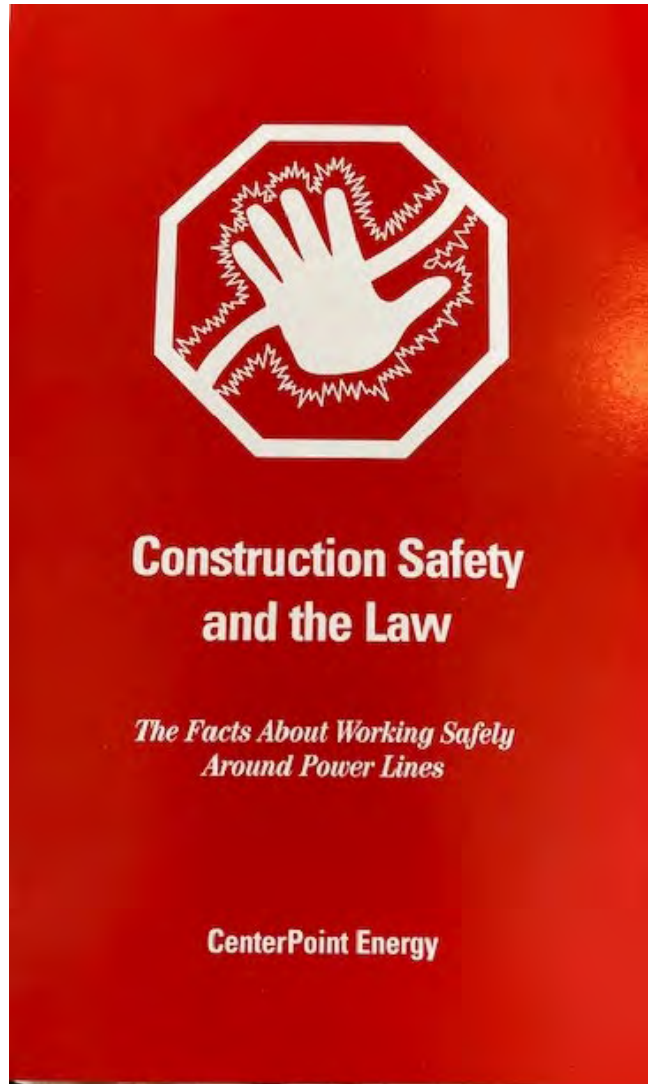
IMPORTANT NOTICE TO APCO EMPLOYEE:

After Completion of Warning Notice, Provide Copies as Listed Below.

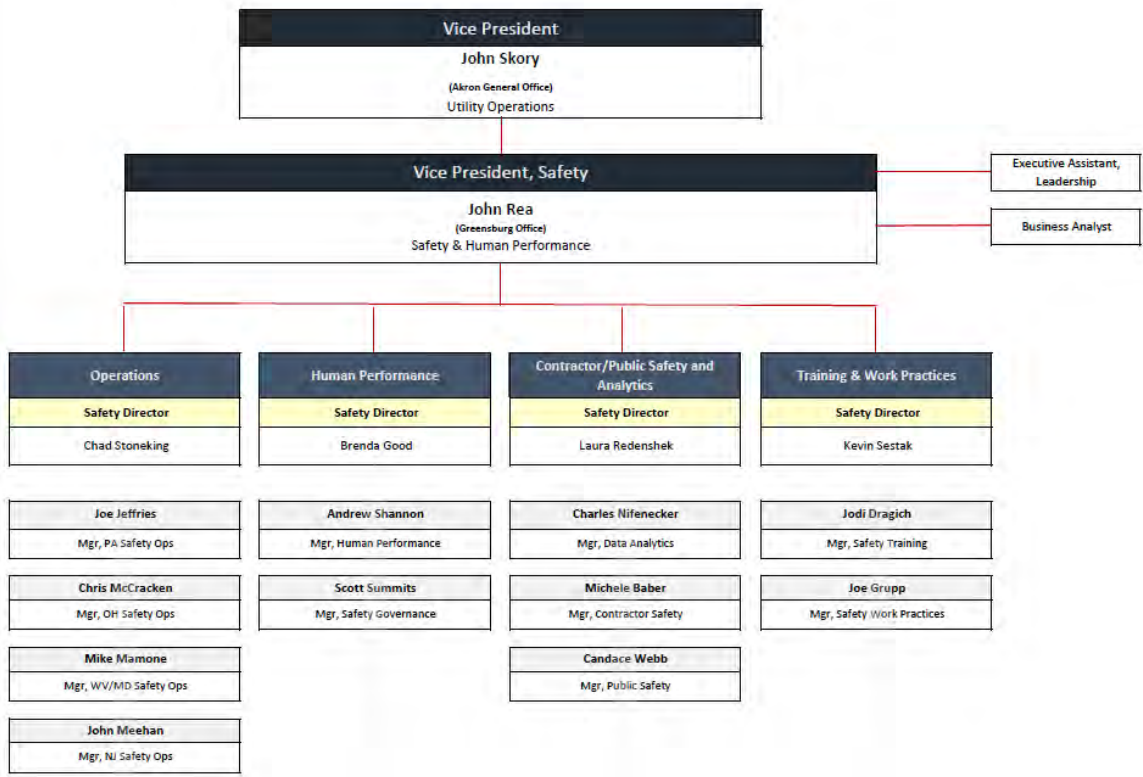
ORIGINAL / Operator Warned YELLOW / Risk Services

Form 5-6127 11/2018

Record of Warning Benchmarking – CenterPoint Energy



FEU Operations: Safety



Public Safety Structure

